



**Park Board
Agenda
Monday, November 18, 2019, 7:00 p.m.
Kirkwood Community Center
111 S. Geyer Road
Kirkwood, MO 63122**



- I. **CITIZEN COMMENTS** *(3 minute time limit. The public comment portion of the meeting is an opportunity to listen to comments from citizens. It is not a question and answer session and the Park Board will not respond to comments or answer questions during the comment period. The Chairperson may refer any matter to staff or hold discussion during the "Other Matters" section of the meeting).*
- II. **APPROVAL OF OCTOBER 21, 2019 MEETING MINUTES**
- III. **COMMITTEE REPORTS**
 - a. Partnership Committee
 - b. Trail Committee
 - c. Finance Committee
- IV. **UNFINISHED BUSINESS**
 - a. Interstate 44 Meramec Bridge Update
 - b. Consideration of Revised Memorial Guidelines
- V. **NEW BUSINESS**
 - a. Missouri Department of Conservation Agreement
 - b. Fireman's Park Maintenance Settlement Agreement
 - c. Other Matters
- VI. **SUPERINTENDENT OF PARKS REPORT**
- VII. **DIRECTOR'S REPORT**
- VIII. **BOARD MEMBER COMMENTS**
- IX. **ADJOURNMENT**

Staff Liaison: Murray Pounds. Phone: 314.822.5857 Email: poundsm@kirkwoodmo.org

Chair: Steve Coates

Accommodation: The City of Kirkwood is interested in effective communication for all persons. Persons requiring an accommodation to attend and participate in the meeting should contact the City Clerk at 314-822-5802 at least 48 hours before the meeting. With advance notice of seven calendar days, the City of Kirkwood will provide interpreter services at public meetings for languages other than English and for the hearing impaired. Upon request, the minutes from this meeting can be made available in an alternate format, such as a CD, by calling 314-822-5802.

From the desk of:
Murray Pounds, Director of Parks and Recreation
111 S. Geyer Road, Kirkwood, MO 63122
Phone: 314-822-5857 Fax: 314-984-5931
E-mail: poundsm@kirkwoodmo.org



Memo

To: Kirkwood Park Board
From: Murray Pounds
Date: November 12, 2019
Re: November 18, 2019 Agenda Memo

The following topics are up for discussion at the September meeting:

Committee Reports

Partnership Committee – The packet includes draft versions of the guidelines and the application. Further action will be taken under new business to approve these items. If approved we will have a couple of requests to consider down the line so we may want the Partnership Committee to do the initial screening on these requests.

Trail Committee – the Trail Committee, which was reconstituted at the last meeting has yet to meet. It would be good to establish a meeting date for this committee.

Finance Committee - The Finance Committee should establish a budget calendar. I would like to confirm the membership of the committee and establish an initial meeting date.

Unfinished Business

I-44 Meramec River Pedestrian Bridge – The packet includes the current version of the conceptual plan as well as results from the second public input session. The Board has the opportunity to weigh in on the conceptual plan. I hope to have information about the input from Sunset Hills' leadership to share at the meeting.

Revised Memorial Guidelines – As indicated previously, the packet includes draft, revised guidelines for considering memorial and dedication requests along with the associated application. The Board can consider approving these documents if desired.

New Business

Department of Conservation Agreement – The draft agreement with the Department of Conservation for cooperative efforts involving Powder Valley and Emmenegger has been reviewed by the state officials. The version in the packet reflects any changes they would want incorporated. The Board should approve entering into this agreement.

Fireman's Park Maintenance Settlement – In the course of treating honeysuckle in Fireman's Park some damage was incurred among the oak tree population due to improper application of chemicals to the honeysuckle. The contractor for the project, Native Landscape Solutions, has acknowledged their responsibility for this situation. The value of the trees damaged has been calculated by Pete to total \$50,000. Pete and Curt have brokered a deal with Native Landscape Solutions to provide two fall foliar treatments for 20 acres in Kirkwood Park, and nine acres in quarry Park as reparation for the damage to the trees. In addition, Native Landscape Solutions will provide two additional years of stewardship and maintenance for the Greentree Park prairie area. I would ask that the Board approve entering into an agreement with Native Landscape Solutions to handle this situation.

Maintenance Report – Curt's report is now included. Reports from Ron Hall and Kylie Christanell are also included.

Director's Report – My report will include information on the following:

- Update on the Performing Arts Center project
- Update on the Kirkwood Park Gazebo and Pavilion projects
- Plans for the December meeting
- Upcoming changes in the recreation staff



**Park Board
Meeting Minutes
Monday, October 21, 2019, 7:00 p.m.
Kirkwood Community Center, Room 202
111 S. Geyer Road
Kirkwood, MO 63122**



IN ATTENDANCE: The meeting was called order at 7:03 p.m. with Chair Steve Coates, Alan Hopefl, Kathy Paulsen, Dave Hufford, Peggy Grever, Alvin Reid, Scott Stream, Matt Helbig and Staff Liaison Murray Pounds and Curt Carron in attendance.

I. CITIZEN COMMENTS

Lara Goeke, 3 Larkspur Ln., Spoke about the need for a safe path through Kirkwood Park from the neighborhoods on the west side of the park.

Mike Hennen, 11911 Stoneywood Dr., Spoke about the trail approaches that are proposed with the I44 pedestrian bridge, and his concerns about safety and wildlife access.

Gwyn Wahlmann, 1002 West Adams, discussed her concern about the I44 pedestrian bridge proposals and its possible impacts.

II. APPROVAL OF SEPTEMBER 23, 2019 MEETING MINUTES

A motion made by Scott Stream, seconded by Alvin Reid. Motion approved by Alan Hopefl, Kathy Paulsen, Peggy Grever, Alvin Reid, Scott Stream and Matt Helbig. Dave Hufford abstained.

III. COMMITTEE REPORTS

None

IV. UNFINISHED BUSINESS

- a. I-44 Meramec River Pedestrian Bridge update – The Board discussed the current plans and their concerns about parking and increased park visitors.

A motion made by Scott Stream to expand parking at the top of the trail as much as possible, seconded by Alan Hopefl. Motion approved unanimously.

V. NEW BUSINESS

- a. Kirkwood Park Trail – Steve Coates discussed renewed interest in connecting the mulch trail to create a path from Couch Rd. to the Adams and Geyer intersection. He asked for volunteers for a Trail Committee. Alan Hopefl, Dave Hufford, Kathy Paulsen and Matt Helbig volunteered.
- b. Memorial and Dedication Request Guidelines – Alan Hopefl discussed a proposal for updating the guidelines from the Partnership Committee. The Board discussed the memorial approval process and what they should and should not consider when reviewing applications. The Board is going to take more time to review the suggestions of the Partnership Committee and bring feedback to the next meeting.
- c. Lions Club Building – Murray discussed the history of the Lions Club and Kirkwood Park, and the possibility of letting the Lions Club rebuild if their storage building was destroyed.



A motion by Scott Stream that if something would happen to the existing structure the Park Board is not willing to commit to allowing a rebuild. Seconded by Kathy Paulsen. Motion approved unanimously.

VI. SUPERINTENDENT OF PARKS REPORT

- a. Curt Carron discussed Superintendent of Parks' report.

VII. DIRECTORS REPORT

- a. Performing Arts Center – Construction is moving along as scheduled.
- b. Department of Conservation agreement – Murray has not heard back from MDC.
- c. Kirkwood Park Gazebo and Pavilion Projects – Construction has begun.

VIII. BOARD COMMENTS

- a. Allan Hopefl stated that the board comments section was missing from the agenda. Allan suggested that board members attend a board training session if one comes up.
- b. Kathy Paulsen invited everyone to attend a tree planting day with 50 Trees on November 2.

IX. ADJOURNMENT – The meeting was adjourned by Chair Steve Coates at 8:30 p.m.

Survey Feedback

Q9. What and where would you like the greenway to connect to?

233 of 358 respondents answered and commented on the following as their preference for greenway connectivity. Of all the 358 respondents:

- 17% expressed support for the current proposed connections in the project
- 8% mentioned other trails
- 0% referenced Grant's Greenway: Grant's Trail
- 5% mentioned not wanting any connections
- 5% mentioned not connecting to Emmenegger Park
- 5% mentioned destinations in the City of Kirkwood
- 3% mentioned not wanting two-year or future trails
- 2% mentioned other parks and natural areas
- 1% mentioned destinations in the City of St. Louis
- 1% mentioned destinations in the City of St. Louis
- 1% mentioned destinations in the City of St. Louis
- 1% mentioned destinations in the City of St. Louis

Q10. Any other general comments?

165/358 respondents answered. Of all the 358 respondents:

- 11% expressed questions or concerns about the environmental impact of future projects that may extend trails or greenways further on the east/north side of the Meramec River
- 9% offered general support or future desired connections
- 2% asked informational questions about flooding, cost, bike lanes, etc.

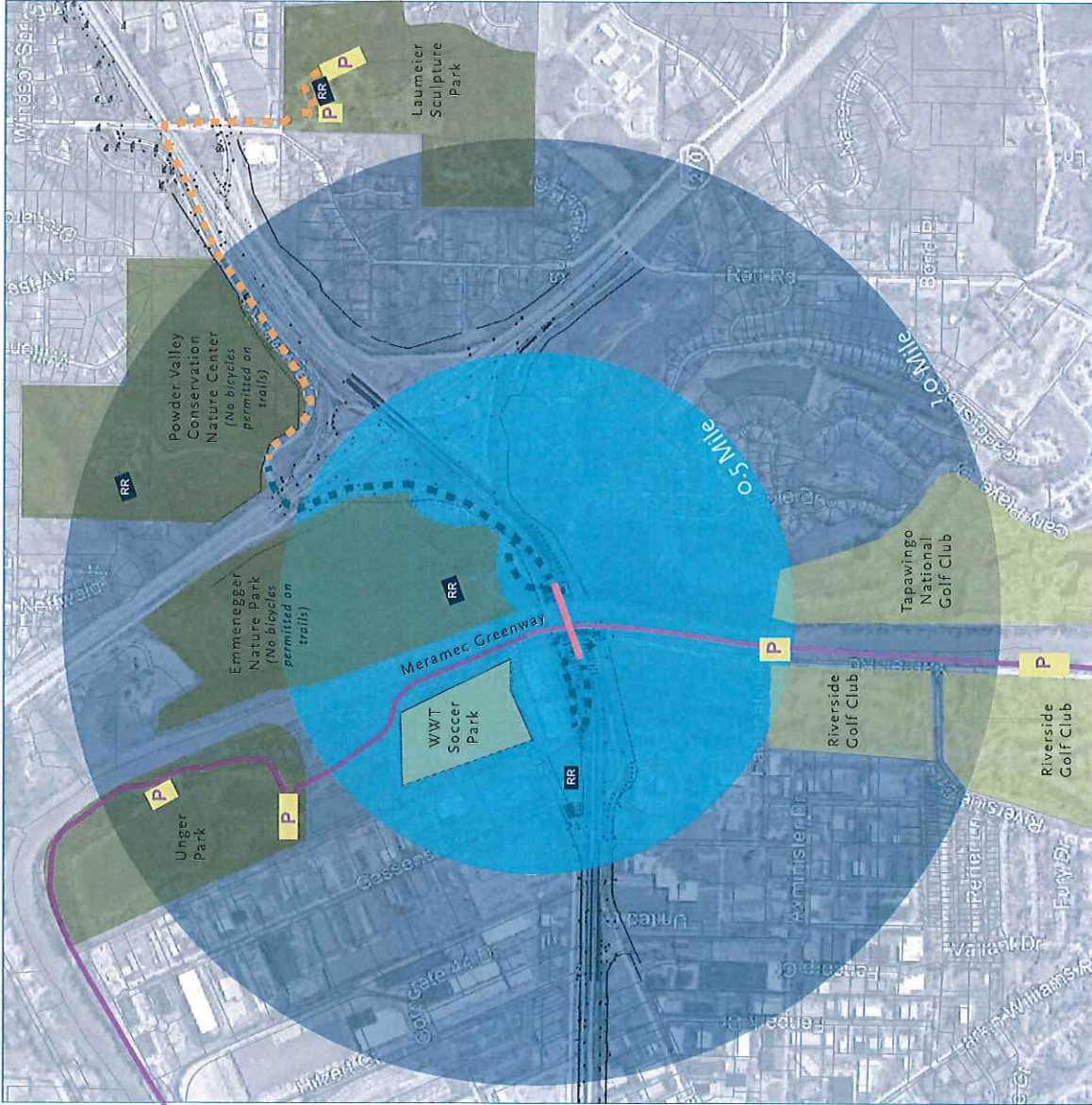
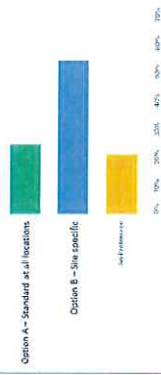
Q28: Which trail identify elements do you prefer?

Answered 175 Skipped 83



Q29: Which trail character elements do you prefer?

Answered 175 Skipped 103



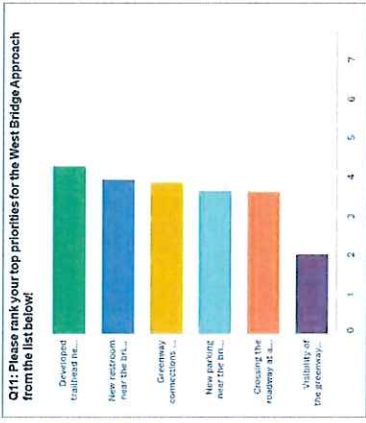
LEGEND

- Existing Trail/Greenway
- Bike / Pedestrian Bridge
- Proposed Trail/Connection to Bridge
- On-road Option for Cyclists
- Existing Parking
- Existing Restroom Facility
- 0.5 mile Radius from Bridges:
 - 2 minute bike ride
 - 5 minute run
 - 8 minute walk
- 1.0 mile Radius from Bridges:
 - 5 minute bike ride
 - 10 minute run
 - 15 minute walk

Survey Feedback

Q11: Please rank your top priorities for the West Bridge Approach from the list below!

	1	2	3	4	5	6	7	SCORE
Developed trailhead near the bridge	47	20.26%	23.45%	21.22%	14.53%	11.17%	3.35%	4.29
New restroom near the trail	32	17.36%	22.53%	20.11%	22.02%	13.65%	4.55%	3.96
Greenway connections near the approach	45	23.65%	17.78%	13.76%	15.00%	13.32%	13.32%	3.98
Landscaping/ornaments/identifiers	38	20.26%	20.26%	20.26%	17.63%	15	15	3.97
New parking near the bridge	35	18.75%	17.35%	15.75%	12.50%	16.85%	10.30%	3.61
Crossing the bridge at an alternate stop	10	5.26%	2.89%	6.38%	3.97%	23.12%	22.60%	2.02
Visibility of the bridge	10	5.26%	2.89%	6.38%	3.97%	23.12%	22.60%	2.02
Other	14	7.37%	8.11%	7.37%	7.37%	7.37%	7.37%	2.02



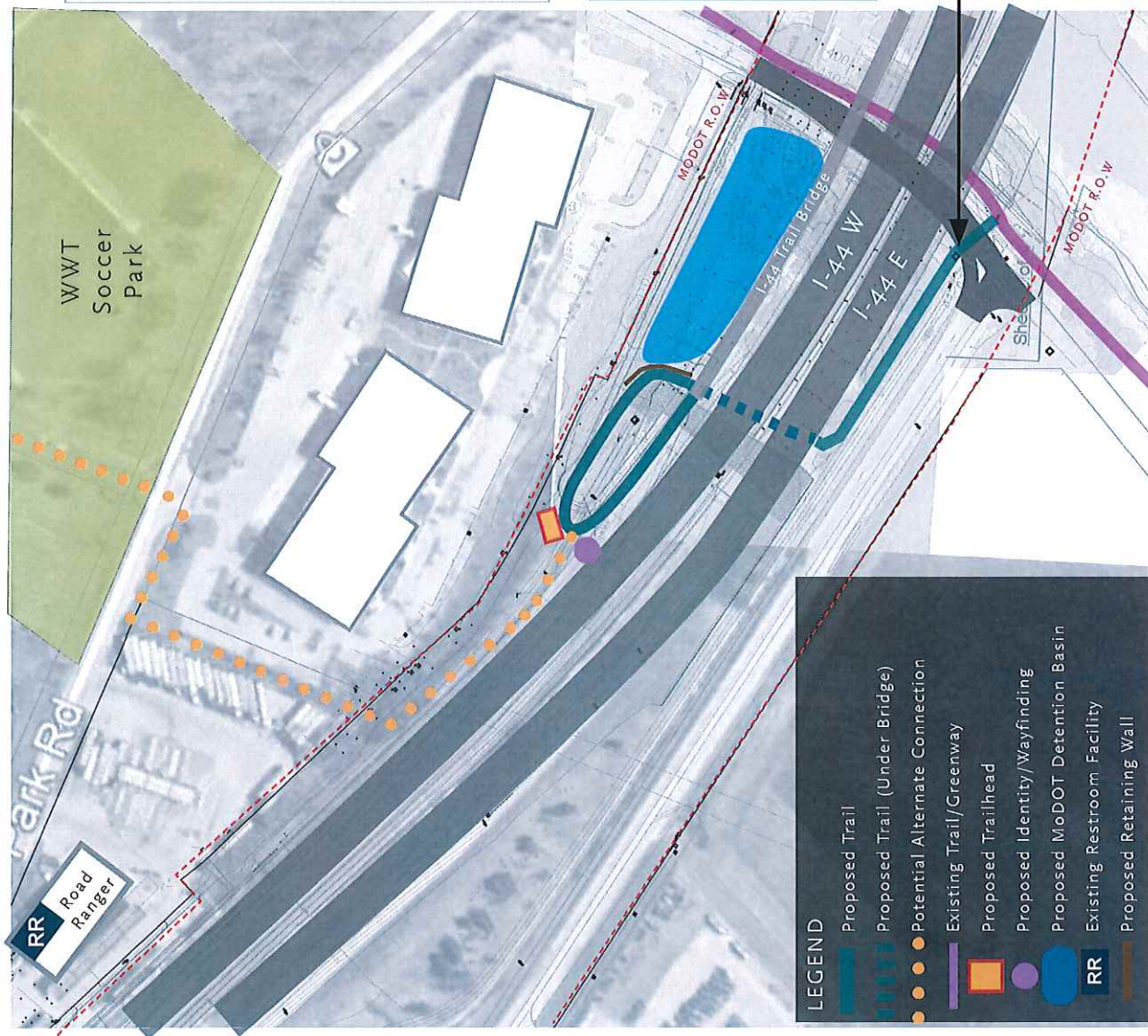
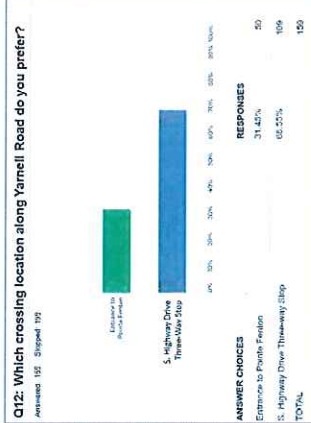
Q13 – Q15: West Bridge Approach Feedback

Respondents identified the following as preferred amenities to include:

- Water Station
- Restrooms
- Lighting, benches, trash cans
- Wayfinding (trail maps, signage, etc.)
- Parking

Respondents also expressed interest in:

- Prioritizing amenities usability over aesthetics
- Keeping native vegetation
- To consider increasing patrolling if there is added parking
- Traffic calming and slower speeds for vehicular traffic



LEGEND

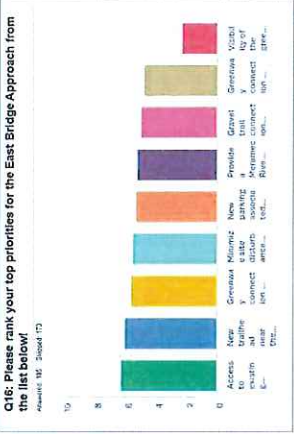
- Proposed Trail
- Proposed Trail (Under Bridge)
- Potential Alternate Connection
- Existing Trail/Greenway
- Proposed Trailhead
- Proposed Identity/Wayfinding
- Proposed MoDOT Detention Basin
- Existing Restroom Facility
- Proposed Retaining Wall
- RR

I-44 PROPOSED TRAIL CONNECTION - WEST
I-44 MERAMEC RIVER CROSSING SWANEE HILLS, MO

Survey Feedback

Q13 - Q15: East Bridge Approach Feedback

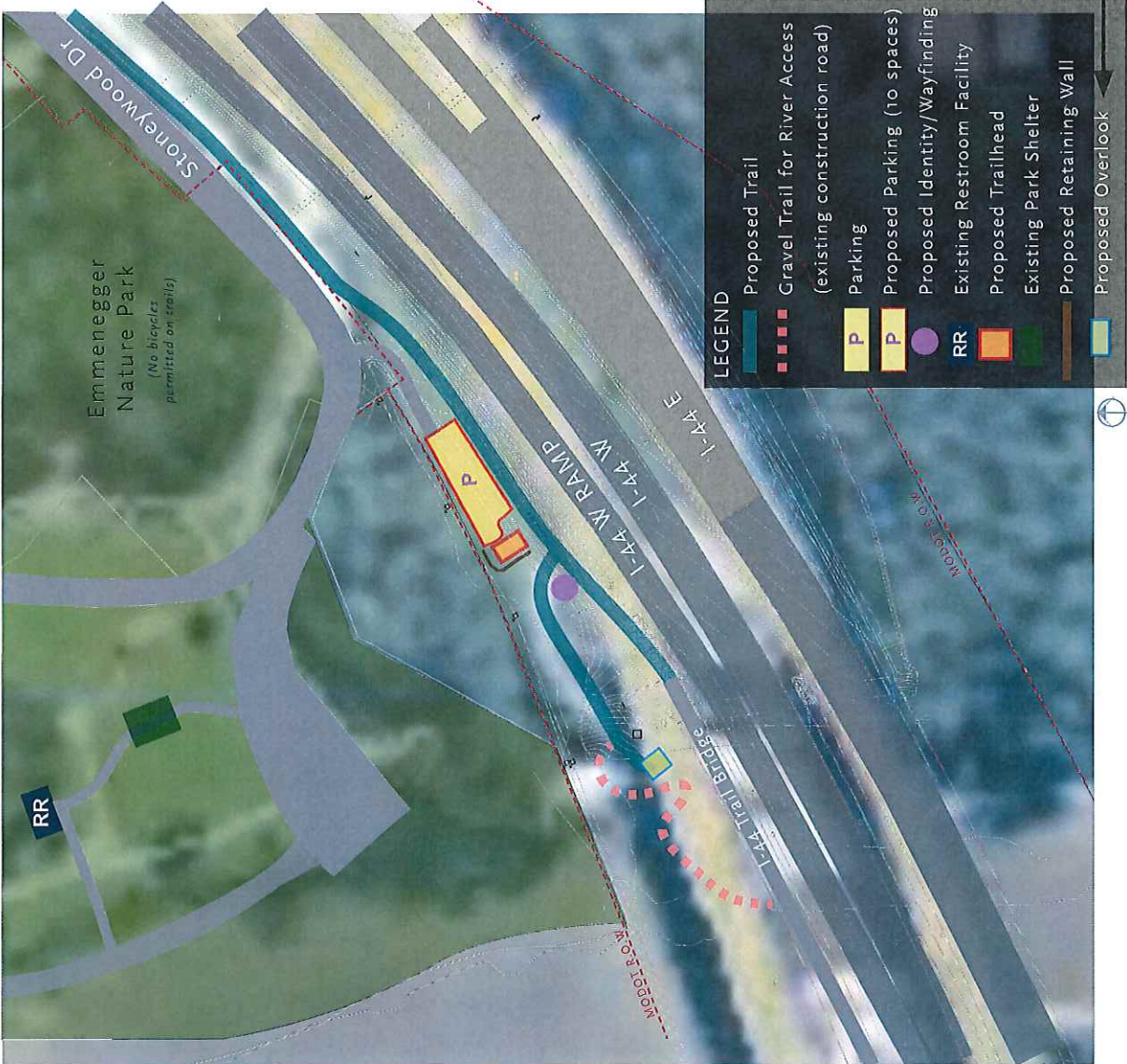
- Respondents identified the following as preferred amenities to include:
- Water Station
 - Restrooms
 - Lighting, benches, trash cans
 - Wayfinding (trail maps, signage, etc.)
- Respondents also expressed interest in:
- Maintaining the native vegetation and enhancement of the Meramec River wildlife corridor
 - Questioned why overlook is part of the plan



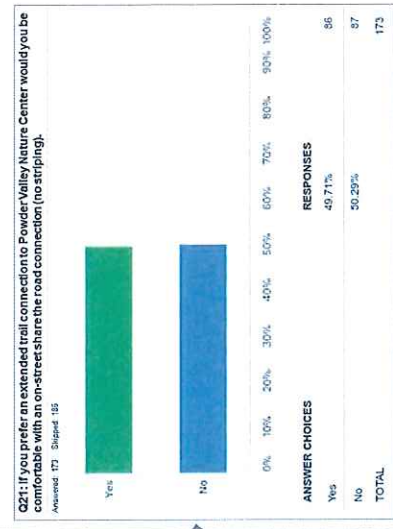
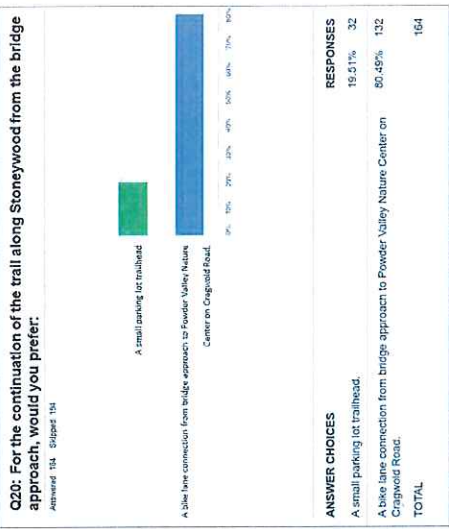
Q16: Please rank your top priorities for the East Bridge Approach from the list below!

Answered: 157 (Closed: 17)

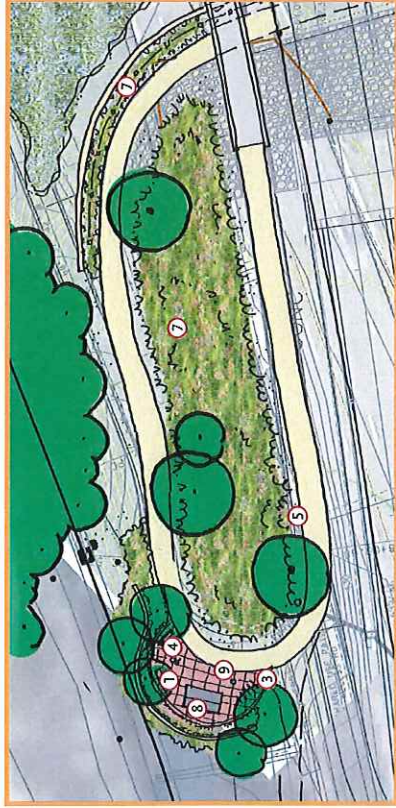
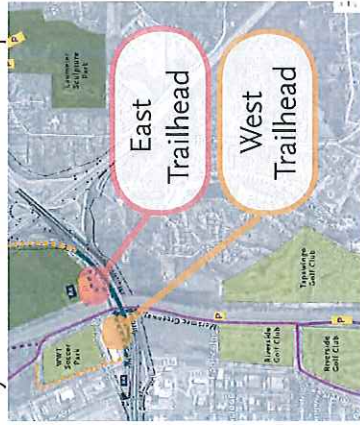
Priority	1	2	3	4	5	6	7	8	9	10	Score
Access to water	16.56%	11.47%	20.38%	10.84%	11.11%	6.45%	3.07%	1.96%	0.64%	0.00%	8.29
Restrooms	25	20	31	16	15	17	10	6	3	0	6.24
Lighting	16.85%	13.37%	10.87%	19.24%	15.67%	11.60%	5.41%	3.17%	1.25%	0.00%	5.64
Benches	25	25	16	27	22	17	6	2	0	0	5.64
Trash cans	17.83%	12.76%	14.01%	13.78%	9.55%	6.37%	3.45%	1.76%	0.64%	0.00%	5.64
Wayfinding	20.95%	13.77%	4.77%	7.93%	8.98%	3.57%	11.30%	11.90%	13.96%	0.00%	5.27
Trail maps	45	23	8	12	15	6	19	10	20	0	5.27
Signage	17.85%	8.94%	12.06%	10.38%	9.19%	10.50%	12.02%	11.50%	8.00%	0.00%	5.26
Native vegetation	26	13	10	10	15	15	10	17	11	0	5.26
Wildlife corridor	9.00%	10.84%	11.64%	14.20%	21.22%	16.78%	7.25%	9.29%	4.79%	0.00%	5.22
Water station	13	16	17	21	31	16	11	14	1	0	5.22
Restroom	6.49%	12.76%	13.60%	8.44%	10.39%	22.20%	10.24%	9.74%	3.84%	0.00%	5.05
Lighting	10	20	21	13	16	24	10	10	9	0	5.05
Benches	2.75%	13.75%	12.41%	13.75%	6.06%	12.41%	20.94%	6.27%	4.45%	0.00%	4.87
Trash cans	4	20	16	20	10	10	30	5	0	0	4.87
Wayfinding	2.72%	2.63%	2.72%	3.47%	4.00%	8.84%	5.44%	13.61%	27.44%	0.00%	3.37
Trail maps	4	3	4	3	0	10	4	20	15	0	3.37
Signage	0	0	0	0	0	0	0	0	0	0	3.37
Native vegetation	0	0	0	0	0	0	0	0	0	0	3.37
Wildlife corridor	0	0	0	0	0	0	0	0	0	0	3.37
Water station	0	0	0	0	0	0	0	0	0	0	3.37
Restroom	0	0	0	0	0	0	0	0	0	0	3.37
Lighting	0	0	0	0	0	0	0	0	0	0	3.37
Benches	0	0	0	0	0	0	0	0	0	0	3.37
Trash cans	0	0	0	0	0	0	0	0	0	0	3.37
Wayfinding	0	0	0	0	0	0	0	0	0	0	3.37
Trail maps	0	0	0	0	0	0	0	0	0	0	3.37
Signage	0	0	0	0	0	0	0	0	0	0	3.37



Survey Feedback



Key Plan and Trailhead Concepts

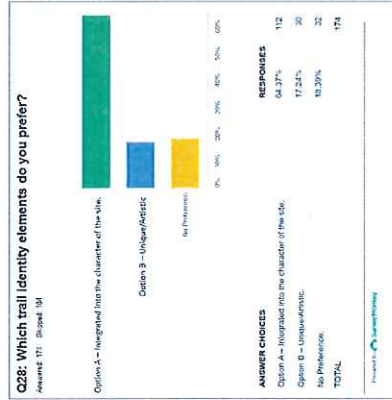
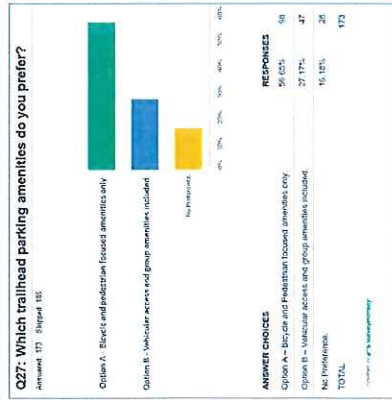
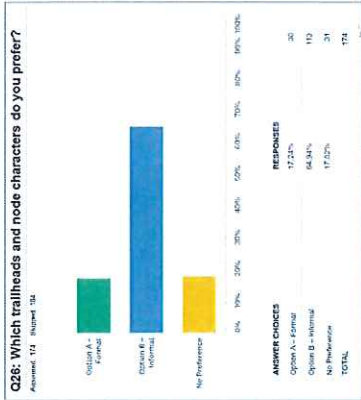
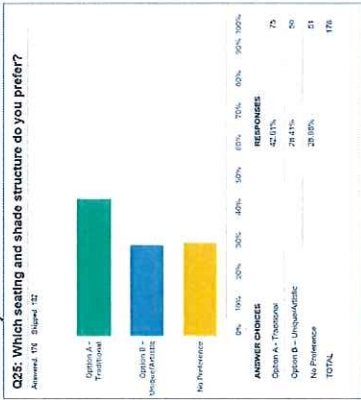


West Trailhead



East Trailhead

Survey Feedback



Trailhead Amenity Inspiration Images

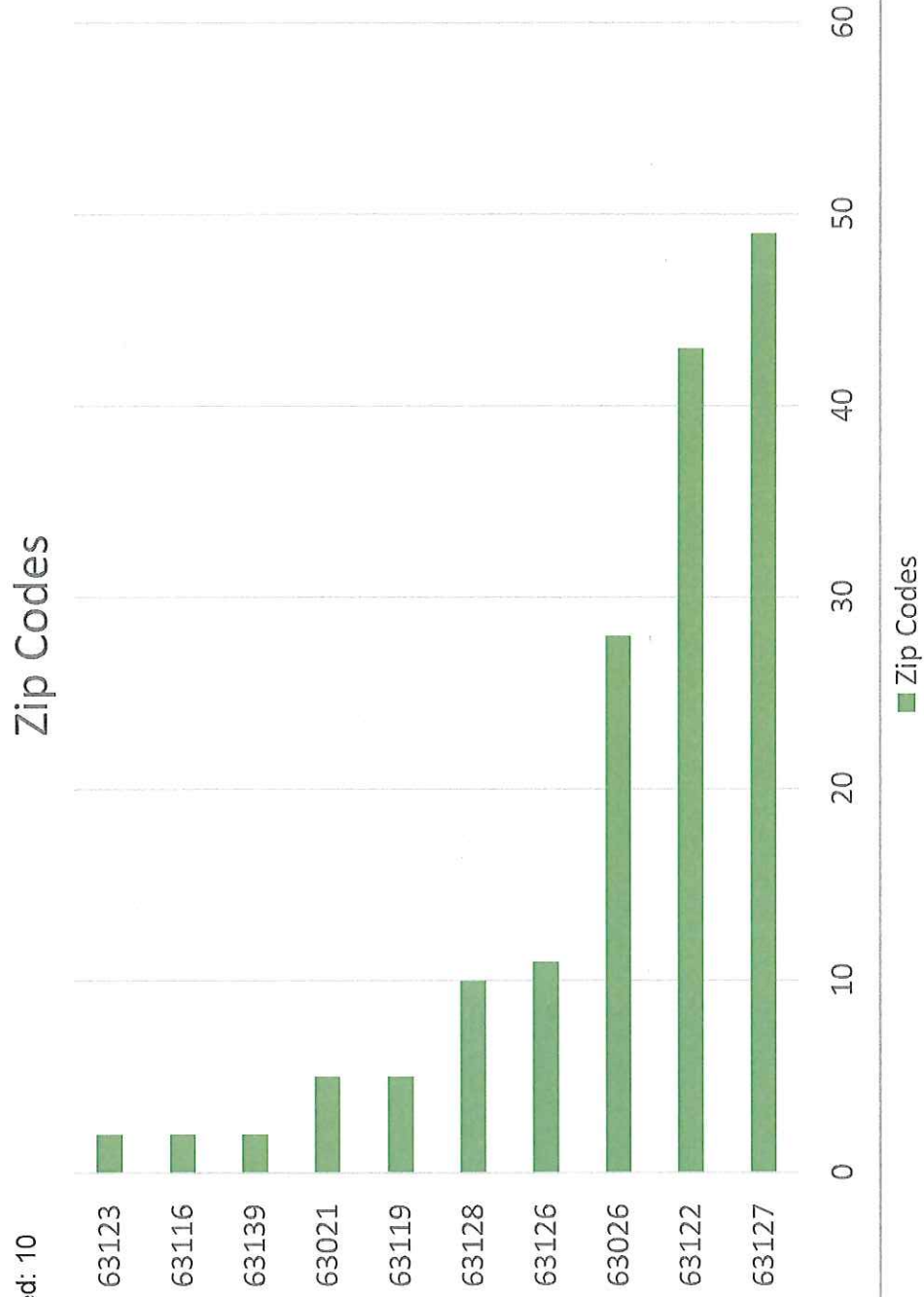


I-44 Meramec River Bridge Replacement

Survey Results from 10/15 through 10/25
185 total responses

Q2: In what ZIP code is your home located? (enter 5-digit ZIP code; for example, 63103, 63105, etc.)

Answered: 175 Skipped: 10



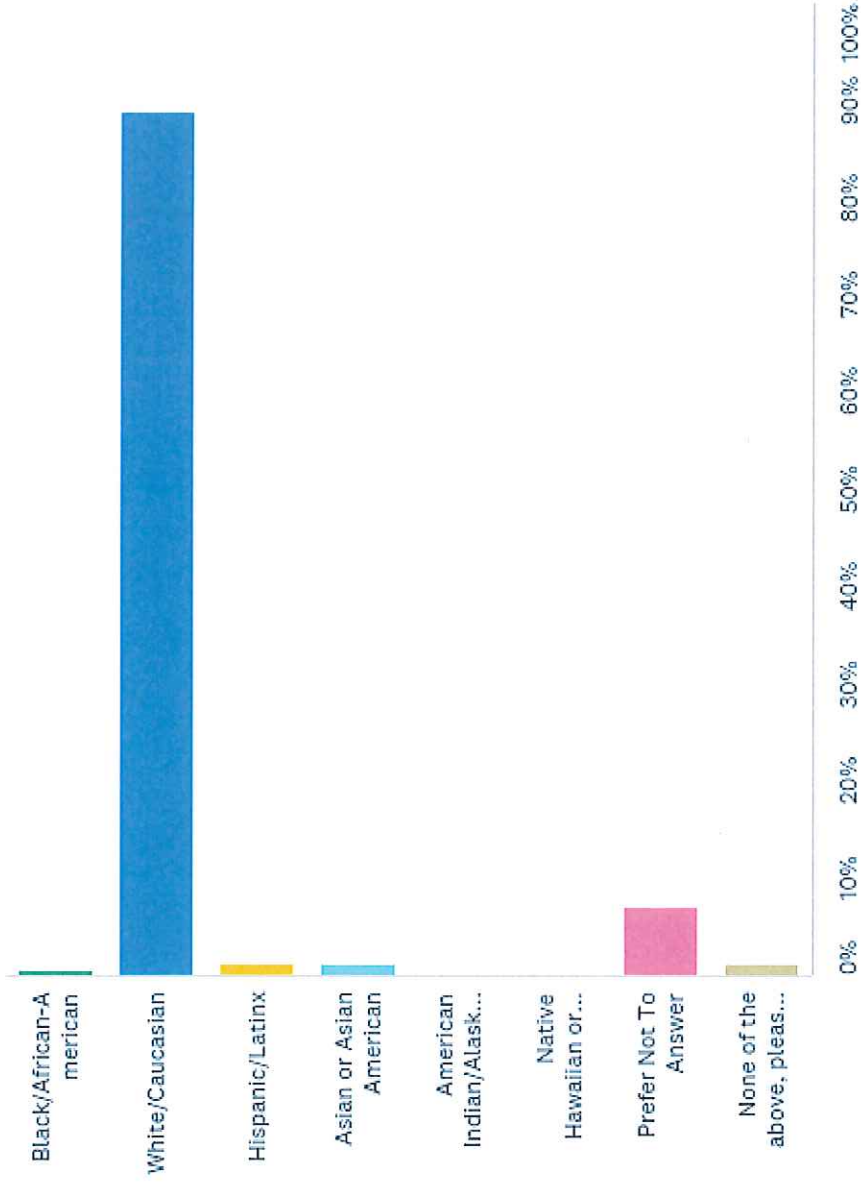
Q3: To help us ensure we're hearing from all residents, please consider this optional question: What is your age range?

Answered: 172 Skipped: 13



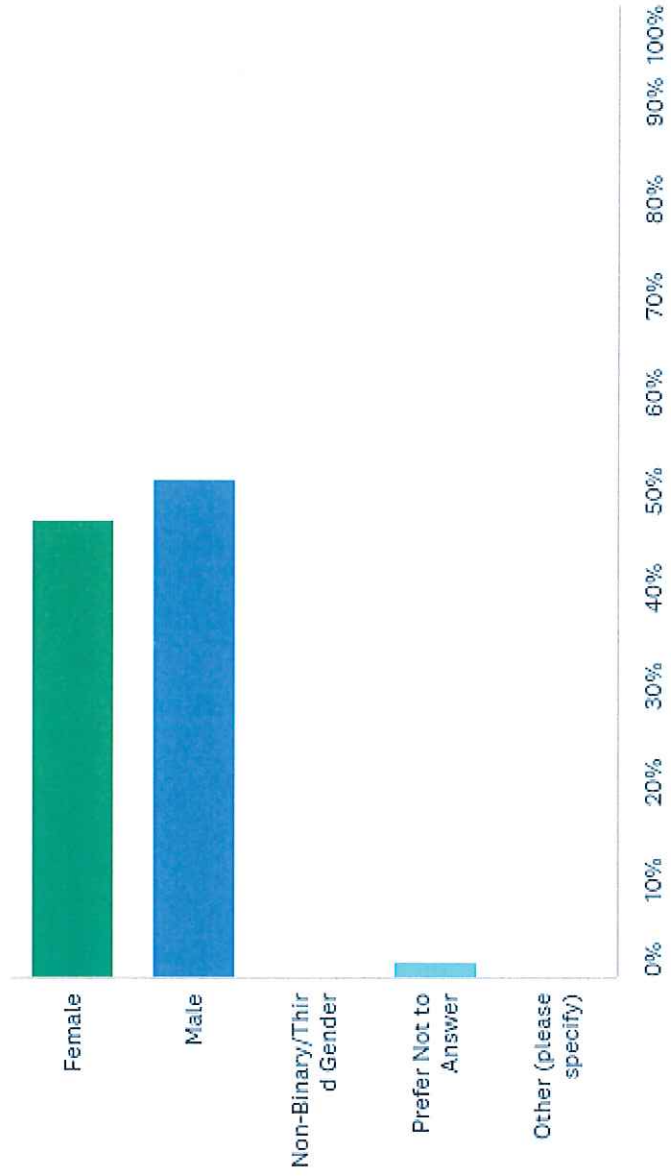
Q4: To help us ensure we're hearing from all residents, please consider this optional question: What is your racial or ethnic identity? (Select all that apply.)

Answered: 170 Skipped: 15



Q5: To help us ensure we're hearing from all residents, please consider this optional question: What is your gender?

Answered: 172 Skipped: 13



Q6: If you'd like to receive updates on this project, provide your email address below.

Results redacted for public posting

Q7: Are there any alignments or destinations from the new bridge that are not shown on the context map that you would like to see identified for future trail connections?

Answered: 78 Skipped: 107

of responses by category:

- 34 No
- 13 Prefer no future possible trail expansion on the east side
- 6 Prefer this Meramec bridge to be elsewhere, near 141 or connecting Unger Park to Greentree Park
- 5 Supportive comment about this project
- 3 Want a connection to Grant's Trail
- 2 Want a connection to Marshall Road

1 each – want parking on east side, want a restroom on west side, parking on west side, want connection to Valley Park, Eureka, Chubb Trail, Lone Elk Park, Emmenegger Park, not Emmenegger Park, bus stop for #101, Tapawingo, Mastadon and Route 66 State Parks, please be sensitive going south on east side

Q8: WEST LANDING - Which connection would you prefer from the trailhead: a connection to Road Ranger or a connection to World Wide Technology Soccer Park? Why?

Answered: 98 Skipped: 87

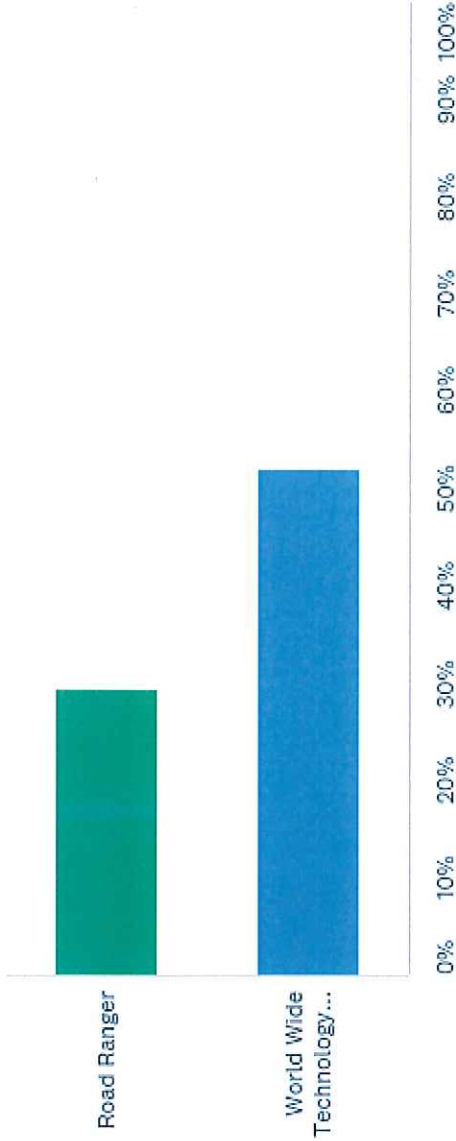
of responses by category:

ROAD RANGER:

- 7 Restroom
- 6 Able to buy food/drink
- 3 Get more greenway traffic
- 3 Soccer Park is congested
- 2 Soccer Park is private
- 2 More connections
- 1 Parking, more resources, open and staffed is better for personal safety

SOCCKER PARK:

- 10 Safer traffic (fewer trucks)
- 5 Access to soccer on greenway
- 4 Closer than Road Ranger
- 3 Prettier/more scenic
- 2 Better connection to Yarnell



Q9: EAST LANDING: Should the existing gravel construction road (in the highway right of way) from the trailhead be repurposed to provide a connection to the Meramec River? Why?

Answered: 102 Skipped: 83

59 No

37 Yes

Reasons for No:

Not necessary, too steep and dangerous, hard to maintain, will flood, hard to patrol, want to leave it natural

Reasons for Yes:

Improve recreation, boat access, fishing, exploring, connecting to our river, will make what people are going to do anyway safer,

Q10: TRAILHEADS: Do you have any comments on the trailhead concepts? Are there any amenities not identified at the trailheads that you would like to see included in this project? Why?

Answered: 83 Skipped: 102

- 14 Restroom is important
 - 12 Sufficient parking is important
 - 11 Blend in with the natural surroundings, minimize impact
 - 10 Please don't do anything in Emmenegger Park
 - 4 Please consult experts about plants and ecology
 - 8 Drinking fountains are important
 - 4 Don't need any trailheads
-

Q11: What excites you most about this project?

Answered: 91 Skipped: 94

- 55 Connectivity, walking and biking, commuting
 - 16 Nothing
 - 7 Access to nature
 - 6 Preserving nature
-

Q12: What concerns you most about this project?

Answered: 98 Skipped: 87

- 15 Potential to damage the bluff, ecosystem, wildlife
 - 14 Possible future expansion of the trail on the east side and flood concerns
 - 10 Leave Emmenegger Park alone
 - 10 Others' fear will derail the project
 - 7 Please carefully balance trails/people and nature/preservation
 - 6 Need better/further access from here (better bike lanes, trails to destinations)
 - 5 Crime increase
-

Q13: General thoughts? Comments?

Answered: 77 Skipped: 108

- 28 Support and/or thanks
 - 8 Preserve the natural environment
 - 7 No future possible trail on the east side
 - 6 Opposed to this project
 - 5 Please help to communicate that bikes are not allowed on Emmenegger Park or Powder Valley trails
 - 3 Would prefer bridge elsewhere
-

Next Door Post #2 before the 10-15 Open House 10-14-2019

I-44 East Bridge Trail Approach – Existing Gravel Path (Not)

Make sure to mark your calendar to attend the second public input meeting on the trail approaches and voice your opposition to any sort of east side trail spur that continues to be on the new draft of the alignment:

DATE: Tuesday, October 15th

TIME: 6-8pm (stop by anytime during this timeframe)

LOCATION: RiverChase of Fenton Recreation Center
(990 Horan Drive, Fenton MO 63026)

While a trail spur through Emmenegger Nature Park is no longer part of the plan, a route down underneath the bridge is. The new drawing has a connection down to an existing "Gravel Trail for River Access." This isn't a "gravel trail." It's a heavy equipment construction road placed there to build the new bridges. Wider than any trail, the road is built to handle cement mixers, 30 ton dump trucks, cranes, semis loaded with steel, and other heavy equipment. All it would need is pavement to make it into a highway grade road.

It won't allow a hiker or biker to connect to the Meramec River itself. The river is way down below this road, unless there's flooding, like there is now. The road is in the floodplain, which is why bridge construction cannot be done down there with the river as high as it is currently.

And MoDOT requires this road to be removed, saying on their website: "As part of any project in a floodplain, MoDOT must design the project to have no additional impact on flooding, based on the current Corps of Engineers flood map projections."

The true reason for this gravel "trail" route is to connect to a future trail along the east side of the river.

Do not ruin the fragile and rare environment of these precious bluffs. Connect the wildlife on the east. Maintain a biking/hiking trail on the west. Please attend the second public comment meeting and voice your opposition to this part of the plan. No overlook. No gravel trail. Come and say once again, NO TRAIL SPUR!!!

Next Door Post #3 before the 10-15 Open House 10-14-2019

I-44 East Bridge Trail Approach - Scenic Overlook (Not)

Please come to the second public input meeting on the trail approaches and voice your opposition to any sort of east side trail spur that continues to be on the new draft of the alignment:

DATE: Tuesday, October 15th

TIME: 6-8pm (stop by anytime during this timeframe)

LOCATION: RiverChase of Fenton Recreation Center

([990 Horan Drive Fenton MO 63026](#))

While not calling it a trail spur, the proposed plan to be presented at this meeting has added a short paved trail from a new trailhead/parking lot that leads down to a proposed Scenic Overlook—in spite of survey respondents not wanting to include an overlook on the east side.

Look at the pictures. Does this view from where the overlook would be placed look "scenic" to you. Looking out, what you'll see is the other side of the bridge and high tension power lines. What you will see is the electronic billboard displaying what the latest lottery jackpot is worth. What you'll see is the Fenton Pointe office building. Beautiful scenery? I think not.

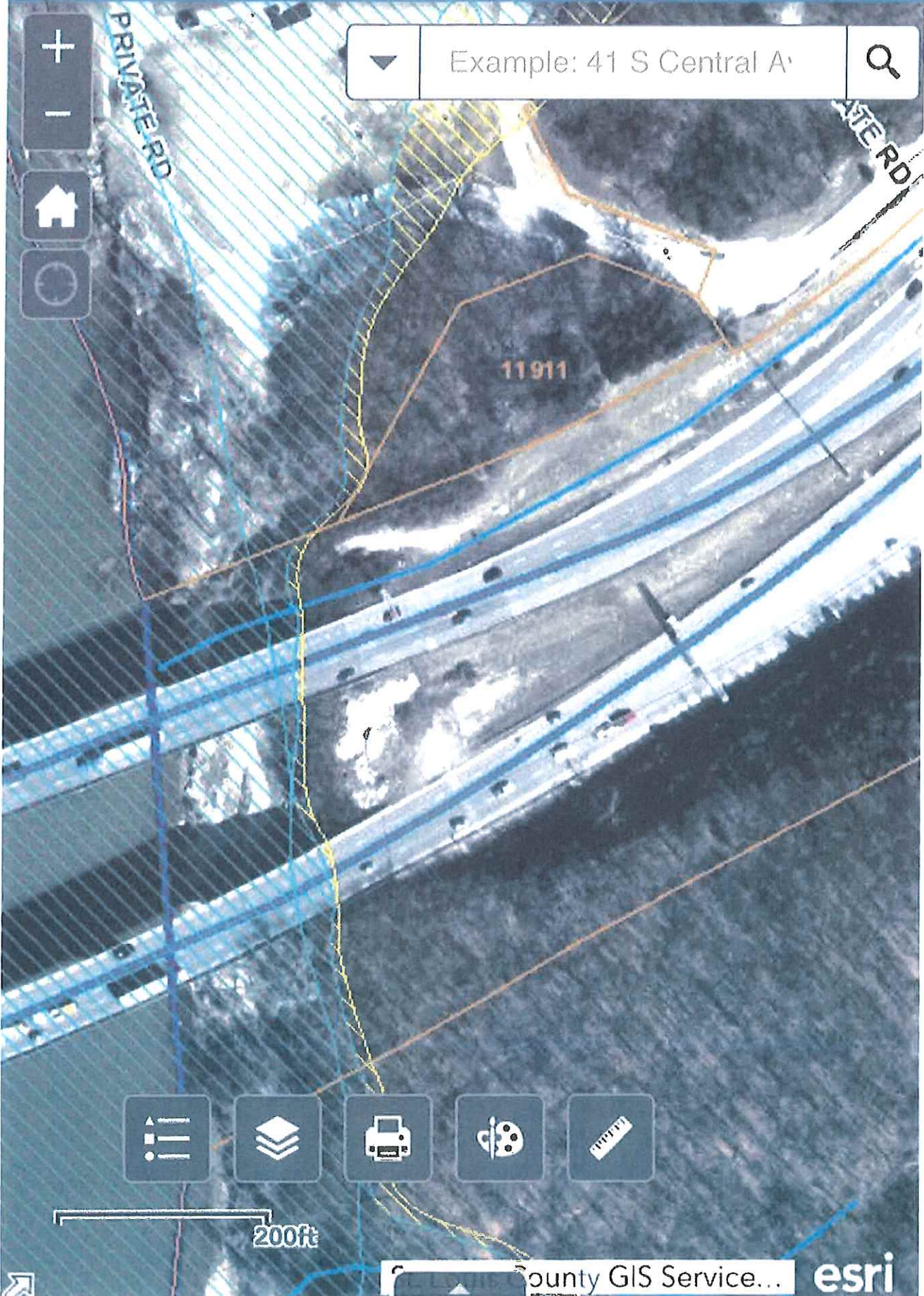
If you put the trail to the overlook together with the gravel road down and underneath the bridge, what you get is a trail spur. The drawing even has the old spur from the original concept plan laid out underneath it in faint white outline. And the spur still goes nowhere.

The true reason for this spur is to connect to a future trail along the east side of the river. Do not ruin the fragile and rare environment of these precious bluffs. Connect the wildlife on the east. Maintain a biking/hiking trail on the west. Please attend the second public comment meeting tomorrow and voice your opposition to this part of the plan. No overlook. No gravel trail. Come and say once again, NO TRAIL SPUR!!!

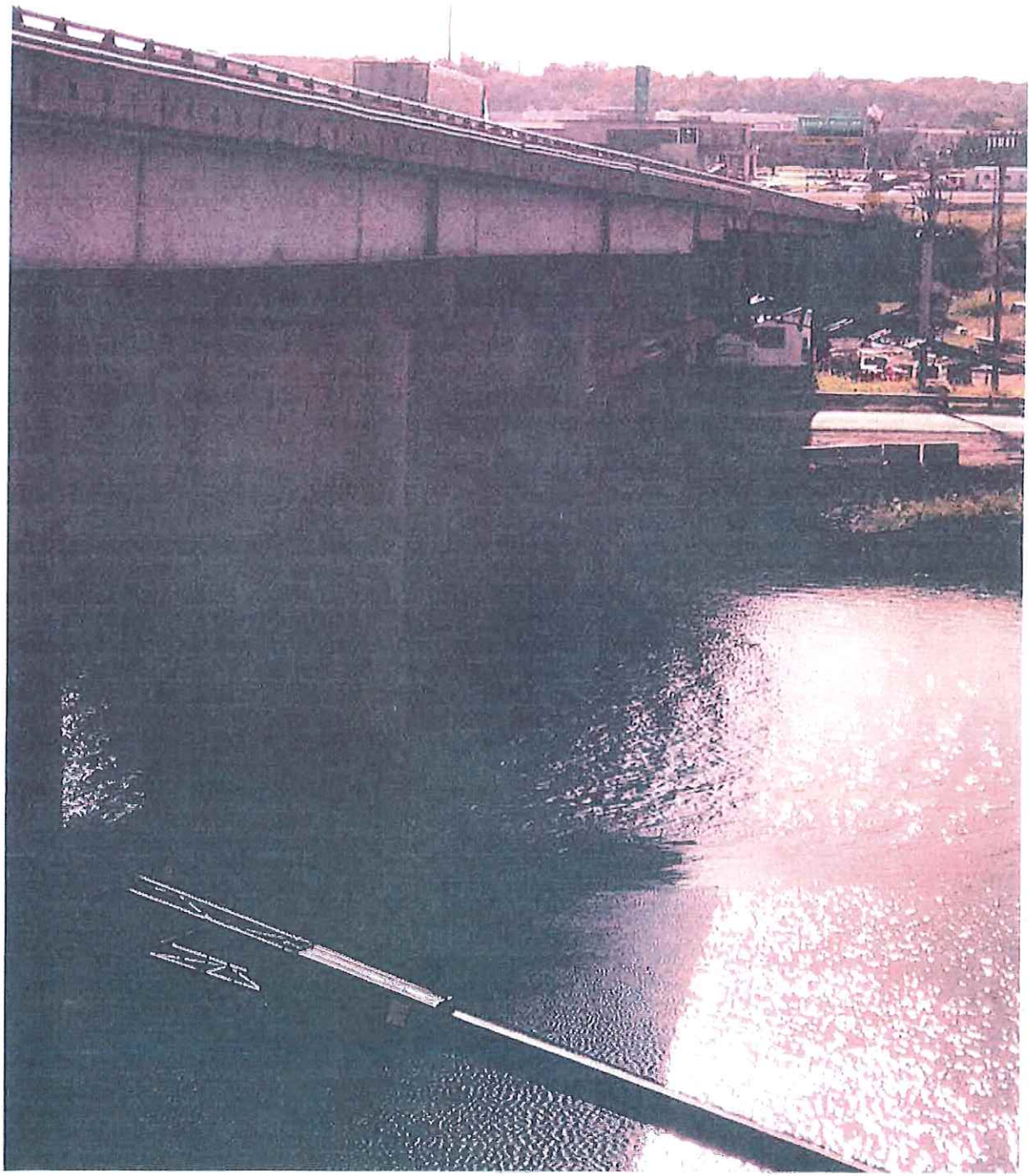


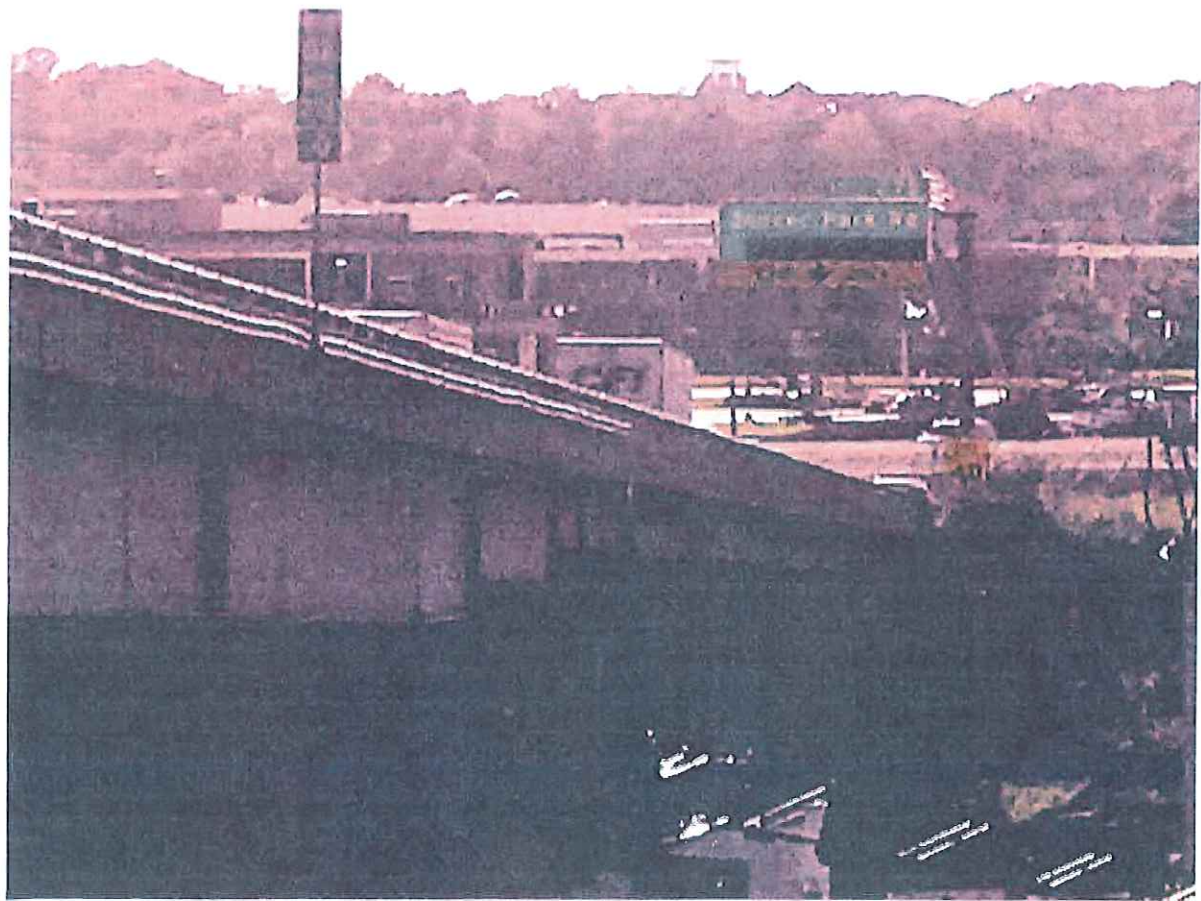


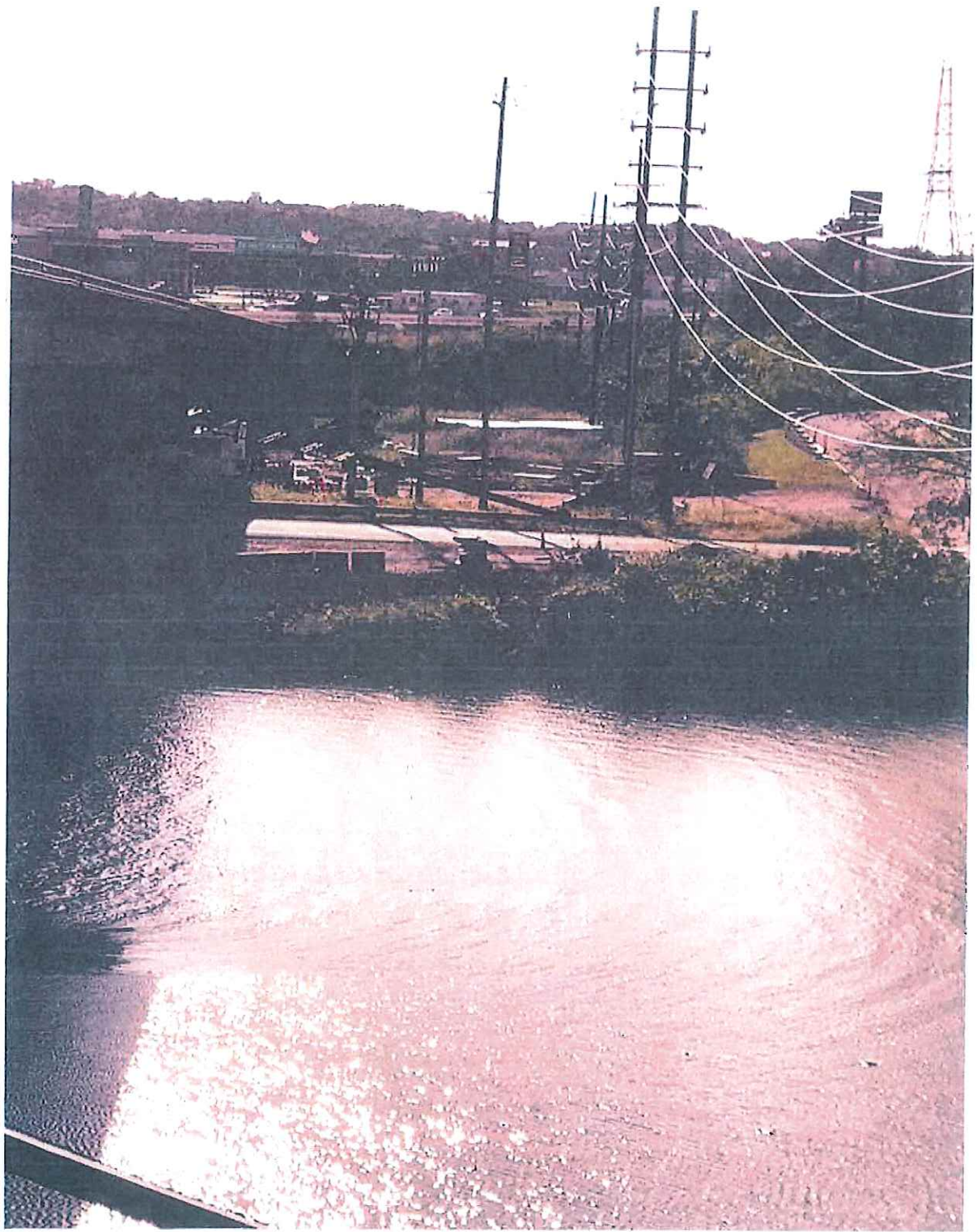
▼ Example: 41 S Central Ave 🔍



200ft











Criteria for Naming Memorials in the Kirkwood Parks System

- 1) Has the individual, group or organization lived or operated in Kirkwood for a minimum of 10 years? (0 – 5 pts)

< 5 Yrs. = 0, > 10 yrs. = 5 pts.

- 2) If a memorial request is being made, is the person in whose name the request is being made been deceased for at least twelve months? (0 – 5 pts.)

Decreased < 12 months = 0 Deceased > 12 months = 5

- 3) Is there written support from at least five groups or individuals who are not relatives of the individual(s) proposed or members of the group or organization making the proposal? Written support should include information on why the nominee should be considered. Include the nominee's significance to Kirkwood, the nominee's outstanding contributions or accomplishments to the community, churches, schools, organizations, etc., or other achievements or honors. (0 – 20 pts)

less than five letters of support = 0 pts. Five or more letters of support = 5 pts.

Do the letters of support demonstrate a large contribution to the majority of Kirkwood residents? (1 - 15 pts)

- 4) Will the nominator(s) pay for the cost of the memorial or dedication development for an existing facility, equipment or program? (0 – 10 pts)

Consider the appropriateness to memorialize or dedicate the proposed object or program. Has the object or program or similar already been memorialized or dedicated? Will the memorialization or dedication interfere with use?

Appropriate (0 - 10 pts.) Already a memorial (0 – 5 pts.) interferes with use (0 pts.)

- 5) Will the nominator(s) pay for long-term future maintenance of the memorial or program? (0 – 10 pts)

Consider how strong is the commitment. Is there a commitment to maintenance of the memorial, dedication or program? Is the commitment adequate to maintain the memorial or program appropriately? Does the nominator(s) have adequate resources to support the commitment?

Strong commitment (1 – 10 pts)

no commitment (0 pts.)

6) Will a donation equal to 50% or more of the cost of development of a memorial, facility, structure or program be donated by the nominee, individual(s), organization or group(s) nominating that individual? (0 – 10 pts.)

Consider whether the proposed memorial object or program meets a need either identified in the Master Plan or by the Board or staff. Does the donation proposed appear to be adequate to support the development proposed? Will there be any restrictions on the use of the memorial or dedicated object?

7) Has the nominee provided service to the Kirkwood Parks and Recreation Department? (0 – 5 pts.)

Consider whether or not the nominee's service benefited a large and diverse population of the community. Is the service unique in its application? Is the service historical or ground-breaking in nature? How long did the service last?

8) Has the nominee served on a board, commission or committee associated with the City of Kirkwood? (0 – 10 pts.)

Consider the length of service, was the service over multiple boards, commissions or committees. Did participation on the board, commission or committee require a great deal of time or effort? Was the nominee an officer of a board/commission? Did the participation of the nominee contribute significantly to Kirkwood and its residents?

9) Has the nominee served as an elected official representing the Kirkwood area, including Kirkwood City Council? (0 – 10 pts)

Consider what office, length of service, and how the service benefited Kirkwood or its residents.

10) Has the nominee made significant or substantial contributions to other Kirkwood organizations, churches, schools, associations or groups outside of city government related functions? (0 - 15 pts.)

Consider what specific contributions were made. Did the contribution affect a wide/diverse spectrum of Kirkwood residents or those living outside Kirkwood? Did the nominee's contribution require considerable time, effort or finances and was it sustained?

Nominee's Total Point Score: _____

10/23/19 ah



MEMORIAL/DEDICATION PROPOSAL/APPLICATION (Draft 11/16/19)

This form is used to capture information regarding proposals to memorialize or dedicate facilities, parks, equipment or programs in the name of individual(s), organizations or groups. The form should be filled out as completely as possible and returned to the Kirkwood Parks and Recreation Department, 111 S. Geyer Road, Kirkwood, MO 63122. For assistance in completing the form, please call the Parks and Recreation Department office at 314-822-5855.

Kirkwood Park facilities are generally named for a geographic area or a natural historic feature, but, as appropriate facilities may be named to reflect significant historic, material or financial contributions to the City or persons of historic or outstanding civic service. When request for such honors are considered, the following criteria are considered in the review of memorial and dedication requests. Meeting any or all of these criteria does not guarantee the request will be approved, and additional information beyond this application may be necessary.

Honoree Criteria

- Has the individual, group or organization lived, worked or functioned in Kirkwood for a minimum of 10 years at some time?
- If a memorial request is being made for an individual(s), is the person(s) in whose name the request being made been deceased for at least twelve months?
- Has the nominee provided service to the Kirkwood Parks and Recreation Department?
- Has the nominee served on a Board, Commission or Committee associated with the City of Kirkwood?
- Has the nominee served as an elected official on the Kirkwood City Council?
- Has the nominee served as an elected official representing the Kirkwood area?
- Has the nominee made significant or substantial contributions to other Kirkwood organizations, associations or groups outside of city government related functions?
- Is there written support from at least five groups or persons who are not relatives of the individuals proposed or members of the group or organization proposed? Written support should include information on why the nominee should be considered, the nominee's significance to Kirkwood, the nominee's outstanding contributions, accomplishments, achievements or honors, the nominee's outstanding community involvement

Development Criteria

- Will a donation equal to 50% or more of the cost of development of a new memorial, facility or structure, piece of equipment or program be donated by the nominee, or; individuals, organization or groups nominating that individual?
- Will the nominator(s) pay for the cost of memorial or dedication development for an existing facility, equipment or program?
- Will the nominator(s) contribute to long term maintenance of the memorial?

Name of Person Completing This Form _____

Organization (if Applicable) _____

Mailing Address _____

Daytime Phone _____ Evening Phone _____

E-Mail Address _____ Date Submitted _____

Name of Individual(s), Organization or Group to be Honored:

Describe briefly why the person(s) organization or group is deserving of this nomination:

Please describe in detail how you propose to memorialize the individual(s), organization or group. Include details on what facility, park, equipment or program will be affected. If dedicating an existing facility piece of equipment or program, include proposed language, if appropriate, that would be presented to recognize the memorial effort. Attach additional sheets if necessary:

Will the nominator(s) be making a financial contribution to the development of a new facility, piece of equipment or program? If so, state the level of contribution to be made.

Will the nominator(s) be willing to assist with the long term maintenance of the facility, equipment or program to be memorialized? If so, state the level of commitment to be achieved.

Did the individual(s), group or organization to be honored live, work or function in the City of Kirkwood? If so, please state approximate length of time, dates, etc.

If the memorial or dedication is for an individual or individuals are they deceased? If so, state date of death. Approximations are acceptable if date of death is more than one year in the past.

Has the individual(s), group or organization contributed to the function of the Kirkwood Parks and Recreation Department? If so, describe that contribution and include approximate dates of service. Attach additional sheets if necessary.

Has the individual(s) served on a Board, Commission or Committee appointed by the Kirkwood City Council? If so, describe that service. Include detail on length of service if known. Attach additional sheets if necessary.

Has the nominee served as an elected official in any capacity in service to the Kirkwood area, including Kirkwood City Council? If so, state office held and dates of service. Attach additional sheets if necessary.

Has the nominee made any substantial or significant contributions for betterment of Kirkwood through involvement with other Kirkwood area organizations? If so, describe that involvement, including organizations served, how service was accomplished, and dates or length of service if known. Attach additional sheets if required.

Support from others in the community is important. Letters of support from non-relatives, persons not directly associated from groups or organizations being proposed are important. Attach all letters of support to this application.

List any other information you would like to have considered in support of this nomination:

**COOPERATIVE AGREEMENT
BY AND BETWEEN
MISSOURI DEPARTMENT OF CONSERVATION
AND
CITY OF KIRKWOOD, MISSOURI**

1. **PURPOSE OF GRANT OR AGREEMENT:** The Missouri Department of Conservation (Department) and the City of Kirkwood (City) have found their relationship to be mutually beneficial and by continuing their relationship it will allow both parties to further their mission.

2. **OUTCOMES:**
To preserve and protect the area known as Emmenegger Nature Park owned by the City of Kirkwood (City), Missouri. The Area also provides access to the Missouri Department of Conservation's Possum Woods Conservation Area.

3. **DEPARTMENT DELIVERABLES:**
 - The Department will, with the City's input, implement the Area Management Plan for Possum Woods CA and Emmenegger Nature Park.
 - The Department will provide expertise for habitat management activities at Emmenegger Nature Park.
 - The Department will provide signage at Emmenegger Nature Park.
 - The Department will coordinate with the City's Volunteer Coordinator on events in which both parties have an interest.
 - The Department will open the gate at Emmenegger Nature Park that allows access to Possum Woods CA daily, with the exception of Sundays and state holidays.
 - The Department will assist law enforcement as needed at Possum Woods Conservation Area.

4. **CITY DELIVERABLES:**
 - The City will grant access and use of Emmenegger Nature Park to the Department.
 - The City will provide labor to carry out the objectives in the Area Management Plan.
 - The City will assist law enforcement to Powder Valley Conservation Nature Center after hours and on holidays as needed.
 - The City will open and close the gate at Powder Valley Conservation Nature Center as requested by the Department including evenings, Sundays, and on state holidays.

5. **PARTIES AND CONTACTS:**

Tamie Yegge
Nature Center Manager
11715 Cragwold Rd.
Kirkwood, Missouri 63122-7000
314-301-1506 ext. 4201
Tamie.Yegge@mdc.mo.gov

Murray Pounds
Director of Parks and Recreation
Kirkwood Community Center
111 S. Geyer Road
Kirkwood, Missouri 63122
Poundsm@kirkwoodmo.org
314-822-5857

Curtis Carron
Superintendent of Parks
Kirkwood Community Center
111 S. Geyer Road
Kirkwood, Missouri 63122
Carroncr@kirkwoodmo.org
314-822-5897

6. **AGREEMENT PERIOD:**

The initial Agreement period is October 1, 2019 through September 30, 2020. The Agreement may be renewed for four (4) one-year periods or portion thereof contingent upon mutual agreement and available funding.

7. **FUNDING AMOUNT AND SOURCES:**

There is no funding for this agreement.

8. **OWNERSHIP:**

The City shall retain ownership of the property known as Emmenegger Park.

9. **MONITORING REQUIREMENTS:**

This agreement shall be monitored by both parties.

10. **TERMINATION:**

Each party retains the right to terminate this agreement at any time, without penalty or recourse, by giving written notice at least sixty (60) days prior to the effective date of the termination.

11. APPLICABLE LAWS AND REGULATIONS, HOLD HARMLESS AND INDEMNITY:

Each Party shall comply with all local, state, and federal laws and regulations related to the performance of this agreement to the extent that the same may be applicable to the entity. Each Party agrees to assume all risks associated with the activities performed under this Agreement and agrees to hold harmless, defend, and indemnify each other, and their agents and employees, from any claim or suit arising from, or in connection with, this Agreement and the activities performed under this Agreement.

APPROVAL:

MISSOURI DEPARTMENT OF CONSERVATION:

(Name)

(Title)

Date

APPROVED AS TO FORM:



General Counsel

(RECIPIENT ORGANIZATION):

(Name)

(Title)

Date

rev.12/03, 11/03, 1/03

MAINTENANCE REPORT FOR NOVEMBER 2019

FROM OCT. 22 THROUGH NOV. 17

HORTICULTURE:

Pete and crew had completed all vegetation removal and bulb plantings with the help of their weekly volunteers in both the SBD and system parks by Oct 31. At that time our seasonal hort personnel's position ended and we are left with 3 FT hort folks now until April. They will be busy with pruning as their main tasking throughout the winter months. It was a real benefit having a full staff of horticulture personnel almost the entire growing season for a change!

PAVILION/GAZEBO:

The gazebo erection is completed and the subcontractor has come in to add the floor and decking surround. The electric is installed as well. We have gotten numerous compliments on the location, purpose, and funding mechanism on this project. The pavilion floor and walks have been poured and just the bare skeleton of roofing is in place. A manufacturing error has set back completion of the structure while replacement trusses are shipped from Michigan. The electrical work is planned but not yet in place. Both facilities will be live for the 2020 season.

QUARRY HONEYSUCKLE EVENT:

This past Saturday Kylie and Renee hosted a removal event at Koestering Park. They also used it as a final makeup date for the Hackathon which was lightly attended and hampered by foul weather. They had about 30 volunteers throughout the day, with 6 hanging on all the way until the 430pm finish. The removal has consisted mostly of cutting of dead honeysuckle which was sprayed out in 2018. Some surviving plants were also removed but live vegetation is now limited to the edge of the highway ROW fence.

EMMENEGGER FOREST AID GROUP:

I received an email from Gwyn Wahlmann stating that the Emmy volunteers including our own Alan Hopefl have reached the northern boundary of the woods where it meets the open field. This dedicated group has worked tirelessly to achieve this goal and have vastly improved the state of the forest. Our congratulations are in order!

CPSI TRAINING AND TEST:

The 3 year certification cycle for Dave Richardson and me was preparing to expire so we went to KC for testing and re-cert. This year we included a third employee who will take the place of one of us at the end of the next cycle. Mike Pitchford, our newest and youngest employee, attended and took the test as a Certified Playground Safety Inspector.

OTHER NEWS...

The irrigation project is closed out. Hayrides (4 consecutive Sundays) have been held with nothing but positive results and comment. Soccer is winding down, finished by the 22nd, while Fall Softball has ended as of the 10th. RFQs were reviewed for inspection of the footbridge at Emmenegger. Award and negotiation of cost is pending.

Services	Jan	Feb	March	April	May	June	July	August	Sept	Oct	Nov	Dec	YTD
Park Enf. Contacts	27	20	25	63	64	28	61	82	55	63			488
Public Contacts	160	137	143	202	225	238	173	265	203	163			1909
PD/FD Assist	3	3	6	3	7	6	5	6	4	4			47
PD Dispatched Calls	0	4	3	1	8	8	4	2	2	3			35
Interpretive	0	0	0	0	0	0	0	0	20	26			46
Reported Maint.	0	4	1	2	3	8	4	3	7	4			36
Injuries	0	0	0	1	1	0	2	1	0	0			5
Wildlife Related	0	0	2	0	1	0	1	1	0	1			6
Recovered Property	2	2	1	1	3	5	5	2	1	5			27
First Aid	0	0	0	0	1	1	1	1	2	1			7
Missing Persons	0	0	1	1	0	1	0	0	0	0			3

Summary of Activities

*Rangers Hall and Diaz worked the Kirkwood Police Department open house in early October. Park information packets and several "Junior Park Ranger" badges were handed out.

*For the month of October Rangers Hall, Diaz & Ferree worked "Trails detail". This detail is 100 % focused on patrolling the high use trails at Greentree, Emmenegger and Kirkwood Parks during scheduled weekends. This detail resulted in 36 public contacts and 6 enforcements. A total of 12 hours were dedicated to the detail.

Monthly Volunteer Report

Monthly Service Summary:

YTD Service Hours: 2690

Number of Unique Episodic Volunteers: 23

Number of Unique Weekday Volunteers: 12

Number of Volunteer Events: 3

Adopt-a-Park Volunteer Events: 4

Adopt-a-Park Volunteer Hours: 1

Monthly Volunteer Hour Total: 260

October | 2019

Upcoming Events:

November 1: Providence Christian Academy Service Day

November 9: Honeysuckle Removal, Quarry Park

November 16: Flowerbed clean up, Kirkwood Park

Recruitment:

-Recruitment is underway for the last few weekend volunteer events and potential Eagle Scout projects.

Event Recap:

-Honeysuckle Hackathon: Low volunteer turnout impacted the clearing of Quarry Park. However, volunteers still cleared approximately 2.5 acres.

-Hands on Kirkwood: 17 volunteers turned out at the Hands on Kirkwood Honeysuckle Removal event in Kirkwood Park. Volunteers continued clearing along Sugar Creek. While there are still a few pockets of honeysuckle visible, one can now see up the hillside.

-Wetland Bridge Staining Project: Volunteers appreciated learning about wetlands and learning about newer features in Kirkwood's parks.

Other Notes:

-Carol Davit, Executive Director and Editor of the Missouri Prairie Foundation, featured our invasive plant control efforts at the Municipal League of Metro St. Louis October meeting. She received positive feedback and noted there was quite a bit of interest in our efforts.