

Kickoff Meeting

Parks & Recreation Master Plan Kirkwood, MO

April 17, 2024 –
Working Committee

PLANNING
DESIGN
STUDIO

ETC
INSTITUTE

pros
consulting
INC.

Agenda

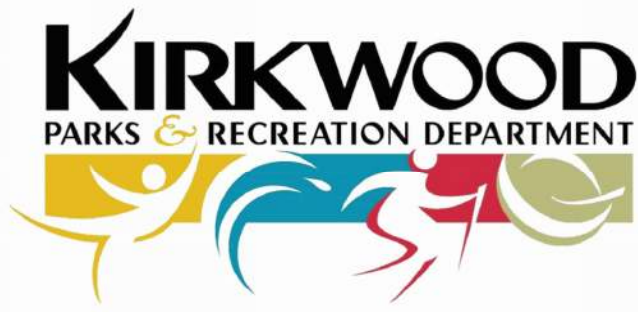


- Introductions/Team Overview
- Project Schedule
- Project Tasks
- Parks & Park Assessments
- Programs/Operations
- Stakeholder Interviews
- Needs Assessment Survey
- Next Steps
- Questions

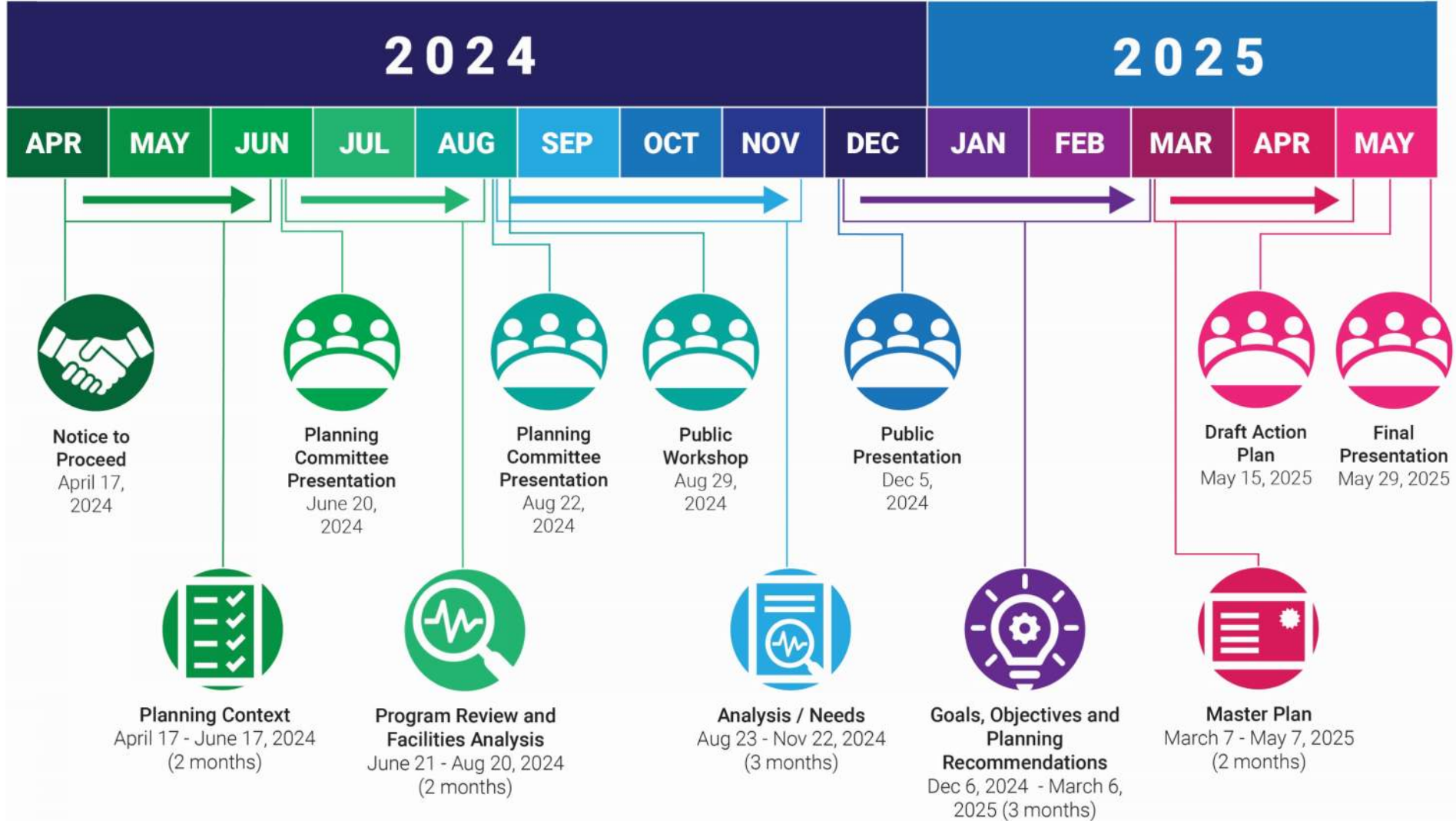
Meet the Team

- Planning Design Studio
 - Project Management
 - Park Inventory & Analysis
 - Master Planning
 - Public Engagement
 - Capital Project Cost
- PROS Consulting
 - Management Structure Analysis
 - Recreation Program Analysis
 - Fee Structure, Program & Staffing Analysis
 - Demographic Analysis
- ETC Institute
 - Level of Service Assessment/
Citizen Survey





Kirkwood Parks and Recreation Master Plan Project Schedule



Project Tasks – Scope of Services

Phase I – Planning Context

- Kickoff Meeting with WC
- Demographic Analysis
- Review of Previous Studies
- Management & Policy Review/Analysis
- Budget Review

Phase II – Review of Existing Programs and Facilities Analysis

- Existing Park & Facility Inventory/Analysis
- Program Analysis
- City Park Facilities Service Area Maps

Phase III – Needs Analysis

- Public Workshop
- Staff and Stakeholder Interviews
- Needs Assessment Survey
- Population Projections
- Benchmarking
- Level of Service Guidelines



Project Tasks – Scope of Services

Phase IV – Goals, Objectives and Planning Recommendations

- Level of Service Standards
- Short and Long-Term Goals
- Physical Planning & Recommendations

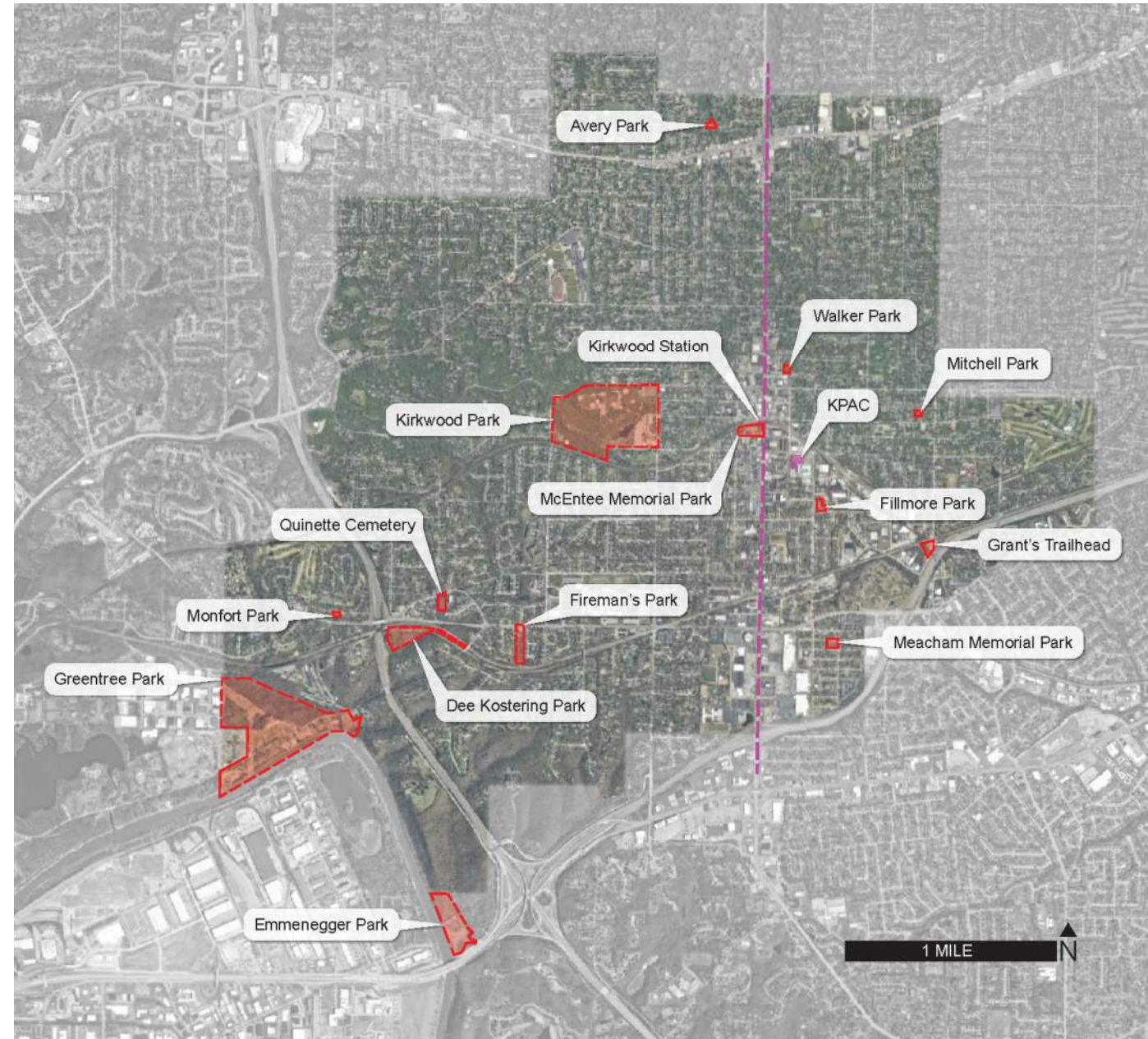
Phase V – Master Plan

- Phased Implementation Plan
- Draft Master Plan
- Draft Action Plan Presentation
- Final Master Plan
- Executive Summary
- Final Presentation



Kirkwood Parks

- Avery Park
- Monfort Park
- Emmenegger Park
- Fillmore Park
- Fireman's Park
- Grant's Trailhead
- Greentree Park
- Quinette Cemetery
- Kirkwood Park
- McEntee Memorial Park
- Meacham Memorial Park
- Dee Koestering Park (Highlands Quarry)
- Mitchell Park
- Walker Park



Park Assessments

1. Maintenance staff & management complete assessments
2. Consultants complete assessments for same facilities
3. Compare results and determine final ratings

The image displays four overlapping copies of the 'Park Site Condition Assessment Form' for Avery Park. The forms are arranged in a descending staircase pattern from top-left to bottom-right. Each form includes the following sections:

- Header:** PLANNING DESIGN STUDIO logo and 'Park Site Condition Assessment Form' title.
- Form Information:** Park Name: Avery Park, Park Address: 221 Avery Dr, Kirkwood, MO, Assessment Date.
- Legend:** A = New/Recent, B = Good.
- Roads, Bridges, & Parking:** Fields for Road Name, Bridge Name, and Parking Lot Name, each with a Length field.
- Sidewalks, Paths, & Trails:** Field for Sidewalk/Trail Name with a Length field.
- Restroom/Concessions, Shelters, & Maintenance Buildings:** Multiple sections for Restroom/Concessions Name, Shelter Name, and Maintenance Building Name, each with fields for Wall Material, Roof Material, # of Toilets, Heated (checkbox), Unh. (checkbox), and Public Sewer (checkbox).
- Playgrounds:** Fields for # of 2-5 Age Structures, # of 5-12 Age Structures, and S.F. of Safety Surface.
- Outdoor Sports Facilities:** Fields for # of Basketball Courts, # of Ball Diamonds, # of Football/Soccer Fields, # of Tennis Courts, # of Pickleball Courts, # of Golf Courses (18 Holes), # of Disk Golf Courses (9 Holes), # of Hockey Rinks, # of Cricket Pitches, and # of Volleyball Courts.
- Site Features:** Fields for # of Entrance Signs, # of Flag Poles / Monuments, and # of Drinking Fountains.
- Other Recreation Facilities:** A table with columns for Total # of Facilities, Rating (A, B, C, D), and Comments. Rows include: # of Pools, # of Splash Pads, # of Picnic Sites, # of Campsites, # of Historical Sites, # of Horseshoe Pits, # of Archery Ranges, # of Exercise/Fitness Sites, # of Dog Parks, Acres of Lakes/Ponds, # of Fishing Docks, # of Boat Ramps / River Access Sites, and # of Amphitheaters (with Seating Capacity).
- Improvements Required:** A series of horizontal lines for notes.
- Other Facility Suggestions/Comments:** A series of horizontal lines for notes.
- Footer:** Project: J2403 Kirkwood Parks MP.

Park Assessments

- Basic Park Data

Park Name: **Avery Park**

Park Address: 221 Avery Dr, Kirkwood, MO

Assessment Date: _____

Prepared By: _____

Rating Guide

A = New/Recent

B = Good

C = Fair (Needs Repair)

D = Poor (Needs Replacement)

- Category of Park Features

Roads, Bridges, & Parking Lots

Road Name	Length	Width	Material	Rating	Comments
_____	_____	_____	_____	A B C D	_____
_____	_____	_____	_____	A B C D	_____
_____	_____	_____	_____	A B C D	_____

- Listing of Park Features

Bridge Name	Length	Width	Material	Rating	Comments
_____	_____	_____	_____	A B C D	_____
_____	_____	_____	_____	A B C D	_____
_____	_____	_____	_____	A B C D	_____

- Inventory

Parking Lot Name	# of Spaces	Material	Rating	Comments
_____	_____	_____	A B C D	_____
_____	_____	_____	A B C D	_____
_____	_____	_____	A B C D	_____

- Rating

- Comments

Sidewalks, Paths, & Trails

Sidewalk/Trail Name	Length	Width	Material	Rating	Comments
_____	_____	_____	_____	A B C D	_____
_____	_____	_____	_____	A B C D	_____
_____	_____	_____	_____	A B C D	_____

Park Assessments

- Playgrounds
 - Age Group
 - Destination
 - Safety Surface
 - Year Built

- Other Recreation Facilities
 - Courts
 - Athletic Fields
 - Rinks
 - Pitches

- Site Features
 - Signs
 - Monuments

PLANNING DESIGN STUDIO **Park Site Condition Assessment Form**

Park Name: Avery Park

Playgrounds

Playground Name or Location	Year Built	Rating	Comments
# of 2-5 Age Structures		A B C D	
# of 5-12 Age Structures		A B C D	
S.F. of Safety Surface	Material	A B C D	

Playground Name or Location	Year Built	Rating	Comments
# of 2-5 Age Structures		A B C D	
# of 5-12 Age Structures		A B C D	
S.F. of Safety Surface	Material	A B C D	

Outdoor Sports Facilities

Total # of Courts/Fields	# Lighted	Rating	Comments
# of Basketball Courts		A B C D	
# of Ball Diamonds		A B C D	
# of Football/Soccer Fields		A B C D	
# of Tennis Courts		A B C D	
# of Pickleball Courts		A B C D	
# of Golf Courses (18 Holes)		A B C D	
# of Disk Golf Courses (9 Holes)		A B C D	
# of Hockey Rinks		A B C D	
# of Cricket Pitches		A B C D	
# of Volleyball Courts		A B C D	

Site Features

Total # of Facilities	Rating	Comments
# of Entrance Signs	A B C D	
# of Flag Poles / Monuments	A B C D	
# of Drinking Fountains	A B C D	

Project: **J2403 Kirkwood Parks MP**

Park Assessments

- Other Recreation Facilities
 - Courts
 - Athletic Fields
 - Exercise Stations
 - Disc Golf
 - Dog Park
 - Picnic Sites
- Other Comments

Park Name: Avery Park

Other Recreation Facilities

Total # of Facilities		Rating	Comments
_____ # of Pools	_____ SF of Pool Area	A B C D	_____
_____ # of Splash Pads		A B C D	_____
_____ # of Picnic Sites		A B C D	_____
_____ # of Campsites		A B C D	_____
_____ # of Historical Sites		A B C D	_____
_____ # of Horseshoe Pits		A B C D	_____
_____ # of Archery Ranges		A B C D	_____
_____ # of Exercise/Fitness Sites	_____ # of Stations	A B C D	_____
_____ # of Dog Parks		A B C D	_____
_____ Acres of Lakes/Ponds		A B C D	_____
_____ # of Fishing Docks		A B C D	_____
_____ # of Boat Ramps / River Access Sites		A B C D	_____
_____ # of Amphitheaters	_____ Seating Capacity	A B C D	_____

Improvements Required: _____

Other Facility Suggestions/Comments: _____

Stakeholder Interviews

- List and Setup
- To be Completed During Phase 3
- Previous Master Plan Stakeholder Groups
 - Institutional Users
 - Active Recreation Users
 - Open Space/Nature
 - Past Park Board Members
 - Recreational and City Staff
 - Youth
 - Park Staff
 - Athletic Associations
 - General Citizens
 - Greentree Festival
 - Walkers/Hikers/Bikers
- Other Potential Groups
 - School District

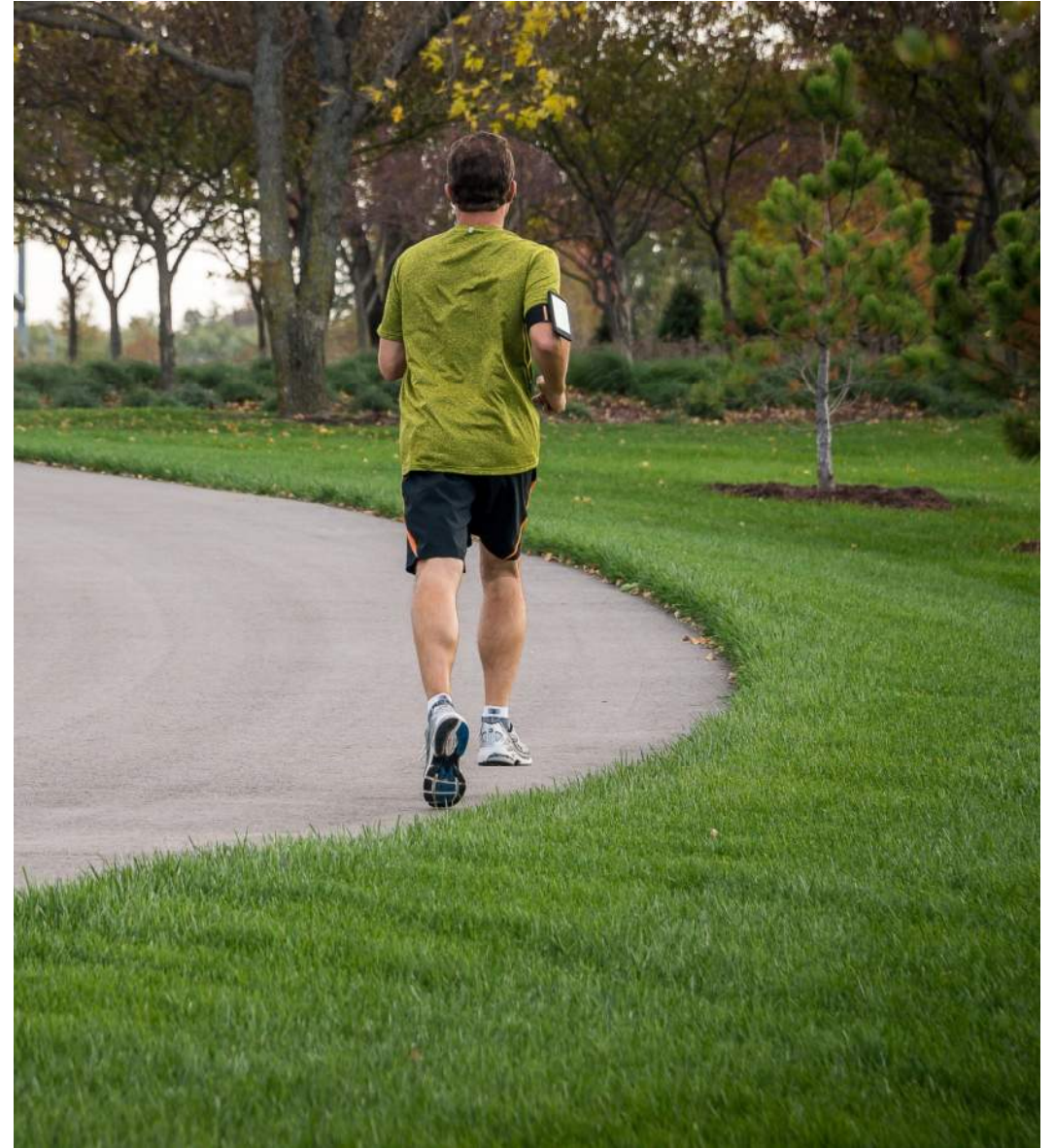


Needs Assessment Survey

- Statistically valid survey - 400 completed surveys will provide results that have a precision of at least +/-5.9% at the 95% level of confidence.
- 10 min – 3 to 4 pages
- Crosstabulation, Priority Investment Analysis

Next Steps

- Background Data from City
- Schedule PROS Field Visit
- Stakeholder Interviews
- Staff - Complete Park Assessments
- Consultant - Complete Park Assessments
- Review possible dates for 1st public meeting



Questions and Discussion



Kickoff Meeting

Parks & Recreation
Master Plan
Kirkwood, MO

April 17, 2024 –
Working Committee

PLANNING
DESIGN
STUDIO 

ETC
INSTITUTE

pros 
consulting
INC.