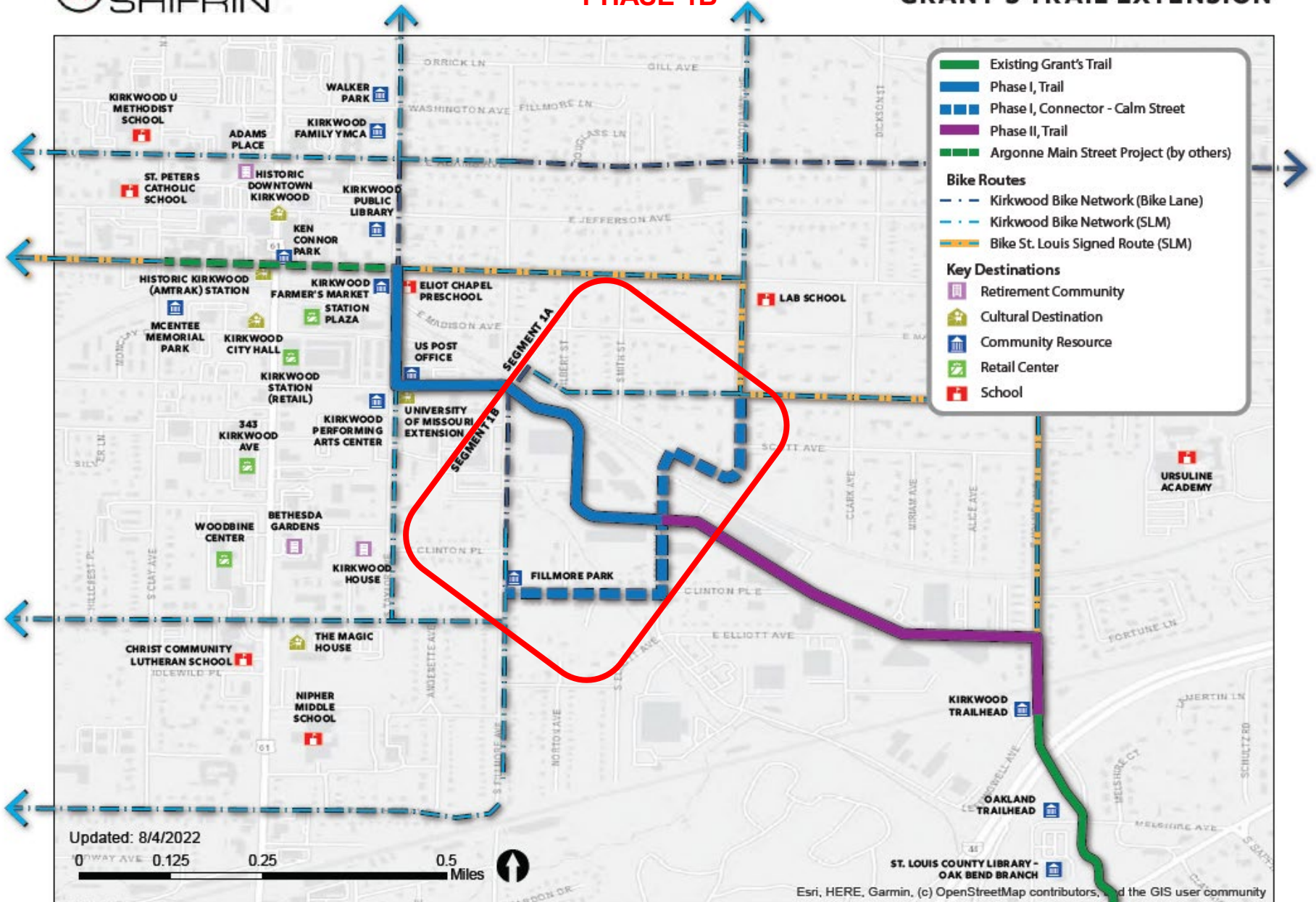


PHASE 1B

DETAILED MAP - GRANT'S TRAIL EXTENSION



Existing Grant's Trail
 Existing Grant's Trail (Green line)

Phase I, Trail
 Phase I, Trail (Blue line)

Phase I, Connector - Calm Street
 Phase I, Connector - Calm Street (Blue dashed line)

Phase II, Trail
 Phase II, Trail (Purple line)

Argonne Main Street Project (by others)
 Argonne Main Street Project (by others) (Green dashed line)

Bike Routes

- Kirkwood Bike Network (Bike Lane) (Blue dashed line)
- Kirkwood Bike Network (SLM) (Blue dashed line with dots)
- Bike St. Louis Signed Route (SLM) (Blue dashed line with orange/yellow border)

Key Destinations

- Retirement Community (Purple house icon)
- Cultural Destination (Green house icon)
- Community Resource (Blue building icon)
- Retail Center (Green building icon)
- School (Red building icon)



Updated: 8/4/2022



APPENDIX B:

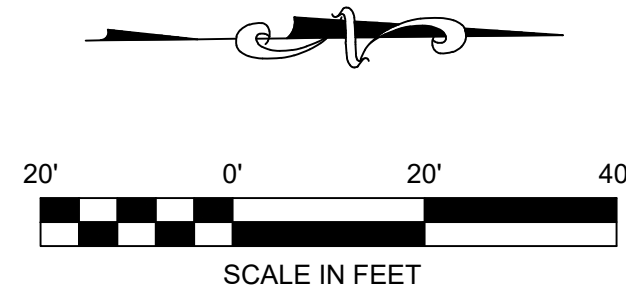
GRANT'S TRAIL CONCEPTUAL DESIGN

OVERALL PLAN PHASE 1B







	<p>GRANT'S TRAIL - CONCEPTUAL DESIGN (APPENDIX B)</p> <p>OVERALL PLAN</p>
 <p>HORNER SHIFFRIN</p> <p>401 S. 18TH ST., STE. 400 SAINT LOUIS, MO 63103-2286 314-531-4321 • FAX 314-531-6886 • WWW.HORNERSHIFFRIN.COM DISCIPLINE: PROFESSIONAL ENGINEERING CERTIFICATE NUMBER: 0000599 EXPIRATION DATE: DECEMBER 31, 2022</p>	
<p>PRELIMINARY</p> <p><small>THIS DOCUMENT IS PRELIMINARY AND IS NOT TO BE USED FOR CONSTRUCTION. IT IS THE PROPERTY OF HORNER SHIFFRIN AND IS NOT TO BE REPRODUCED OR TRANSMITTED IN ANY FORM OR BY ANY MEANS, ELECTRONIC OR MECHANICAL, INCLUDING PHOTOCOPYING, RECORDING, OR BY ANY INFORMATION STORAGE AND RETRIEVAL SYSTEM, WITHOUT THE WRITTEN PERMISSION OF HORNER SHIFFRIN.</small></p>	
<p>DATE: 8/17/2022</p> <p>DESIGNED: DRAWN: CHECKED:</p>	<p>NO. DATE</p> <p>REVISION</p>
<p>JOB NO. 2111900</p>	
<p>SHEET</p> <h1 style="font-size: 2em;">COV</h1>	
<p>Name: License No. Expiration Date:</p>	

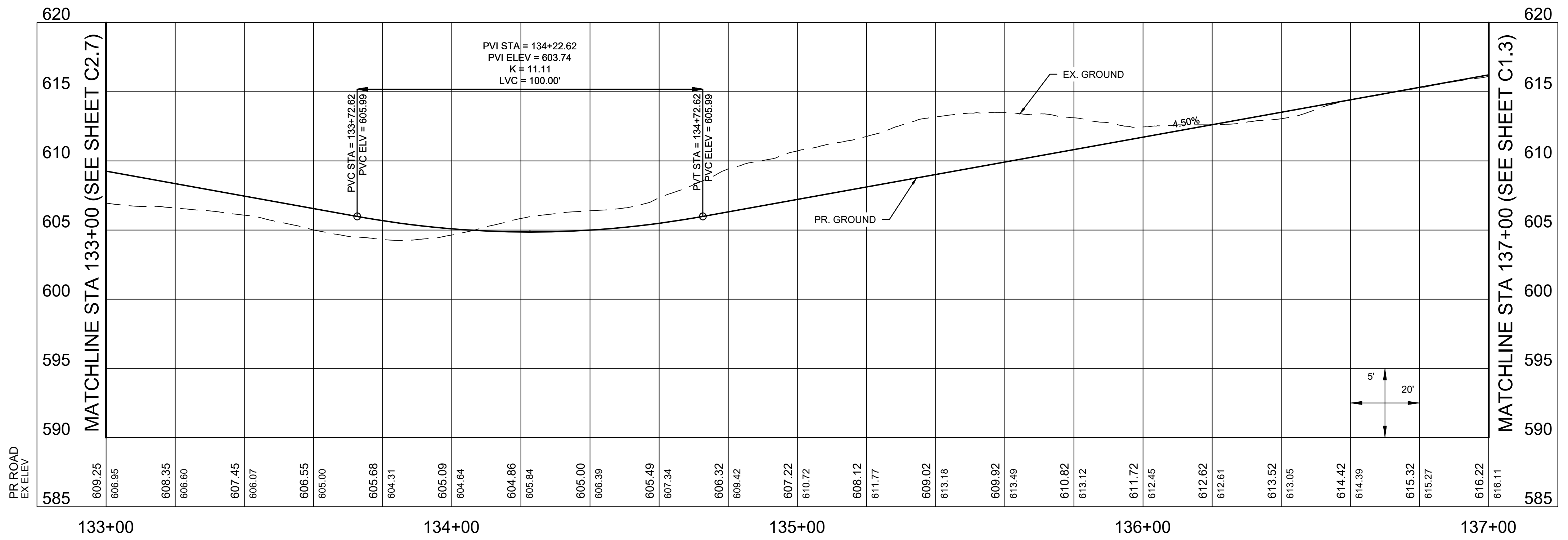
August 17, 2022

C:\pwr\c\l\l\me8196\GrantsTrails_Conceptual_PlanSheets.dwg



LEGEND

-  CONCRETE TRAIL
-  DECORATIVE PAVEMENT
-  CONCRETE PAVEMENT OR SIDEWALK
-  NEW GRASS SHOULDER OR BUFFER
-  RAISED INTERSECTION
-  PERVIOUS PAVERS



MATCHLINE STA 137+00 (SEE SHEET C1.3)

MATCHLINE STA 133+00 (SEE SHEET C1.1)

PRELIMINARY	
Name:	License No:
Expiration Date:	

HORNER SHIFRIN
 401 S. 18TH ST., STE. 400 SAINT LOUIS, MO 63103-2286
 314-531-4321 • FAX 314-531-6866 • WWW.HORNERSHIFRIN.COM
 DISCIPLINE: PROFESSIONAL ENGINEERING
 SERVICE AREA: ALL STATES
 EXPIRATION DATE: DECEMBER 31, 2022

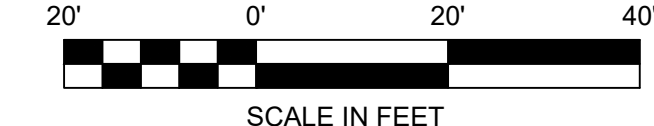
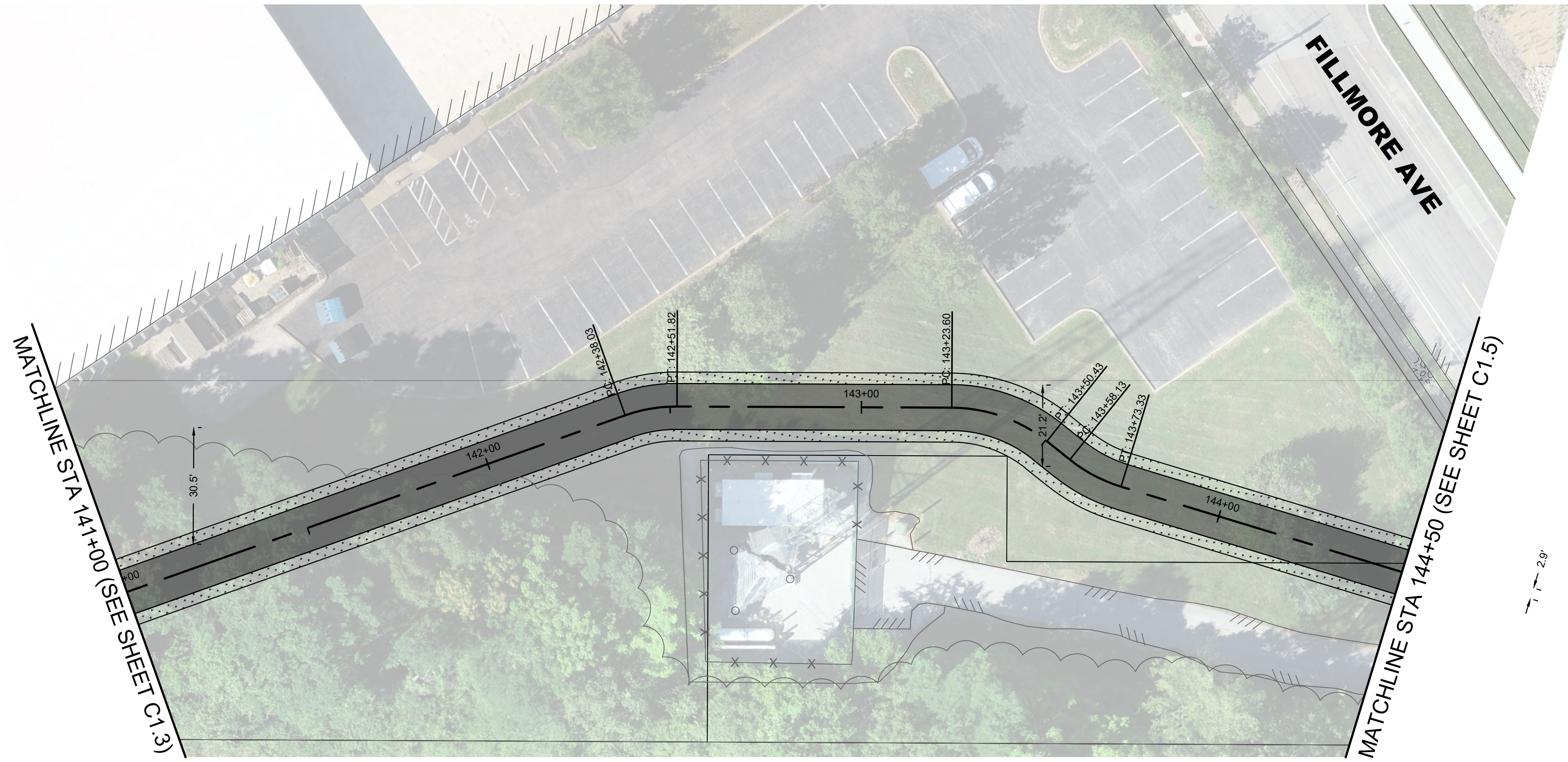
**GRANT'S TRAIL -
 CONCEPTUAL DESIGN
 (APPENDIX B)
 PHASE 1 - PLAN SHEETS**



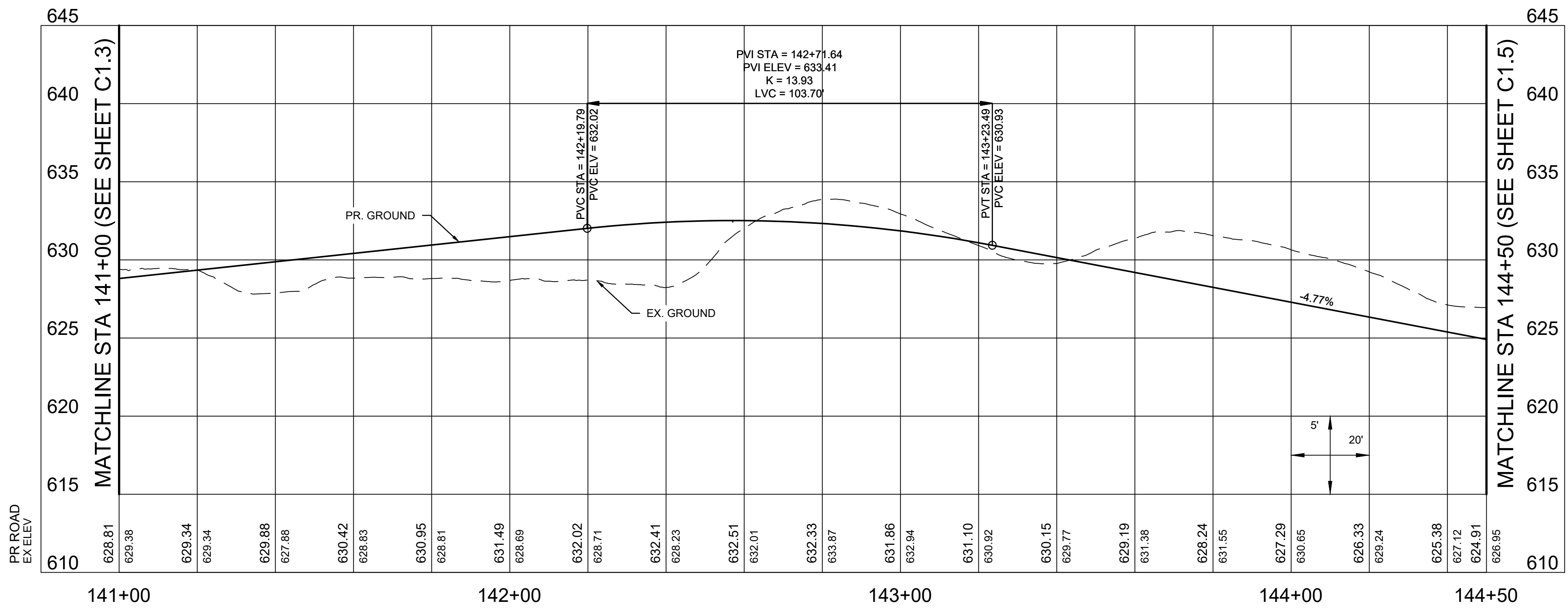
DATE:	8/17/2022
DESIGNED:	
DRAWN:	
CHECKED:	
JOB NO.	2111900

SHEET
C1.2

NO.	DATE	REVISION



- LEGEND**
- CONCRETE TRAIL
 - DECORATIVE PAVEMENT
 - CONCRETE PAVEMENT OR SIDEWALK
 - NEW GRASS SHOULDER OR BUFFER
 - RAISED INTERSECTION
 - PERVIOUS PAVERS



NO.	DATE	REVISION

HORNER SHIFRIN
 401 S. 18TH ST., STE. 400 SAINT LOUIS, MO 63103-2286
 314-531-4321 • FAX 314-531-6866 • WWW.HORNERSHIFRIN.COM
 DISCIPLINE: PROFESSIONAL ENGINEERING
 SERVICE: PROFESSIONAL ENGINEERING
 EXPIRATION DATE: DECEMBER 31, 2022

**GRANT'S TRAIL -
 CONCEPTUAL DESIGN
 (APPENDIX B)
 PHASE 1 - PLAN SHEETS**



DATE: 8/17/2022
 DESIGNED:
 DRAWN:
 CHECKED:
 JOB NO. 2111900

SHEET
C1.4

GREENWAY TRAIL

