



2nd Quarter, 2022

Quarterly Progress Report

I think we can all agree that even though we had some snow and ice this year, the temperatures weren't too bad. Winter can be a busy time for us depending on how extreme the temperature change might be, but because of the "milder than normal" temps, our workload was really manageable throughout this quarter. Distribution ended up making 40 water main repairs, replaced 2 fire hydrants and performed maintenance on 4 others. We also replaced 4 valves and performed maintenance on 2 other valves. Since the beginning of the year, Support Services conducted over 100 service related calls. These calls included high bill complaints and helping residents resolve water pressure problems. We performed 25+ new taps and tap destroys along with 60 meter and dial changes. The Support Services crew and the Distribution crew often assist each other during large projects involving the repair or replacement of large water tap connections.

Did You Know?

Did you know that one of our methods for water main break repairs is the use of a full circle clamp (see picture titled "16 inch repair @ Couch and Rosehill")? This 1, 2 or sometimes 3 piece clamp, which is made of stainless steel to last for years to come, is a permanent repair and makes for a quicker repair time than cutting in a new section of pipe. We are able to use this repair method as long as the failure is not over 26 inches.



Couch @ Rose Hill – 16" Main Repairs

is a permanent repair and makes for a quicker repair time than cutting in a new section of pipe. We are able to use this repair method as long as the failure is not over 26 inches.

Spotlight



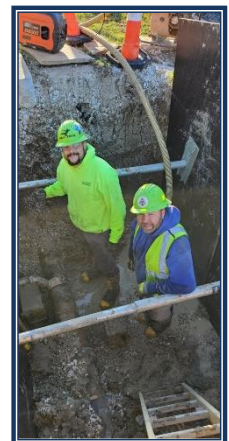
Stay tuned for a new "Spotlight" feature in the next newsletter.

Upcoming Projects

The Geyer Road water main replacement project starting at Nirk and ending at Adams is just now getting underway. This will last approximately 180 days and requires daily lane closures at times. Please be patient and careful if travelling through this area.



Essex 10" Cutout



Tree Ct. – Service Line Repair